

Sulina Road, Brixton, SW2

3 bedroom house for sale

£900,000

Freehold

Property Details

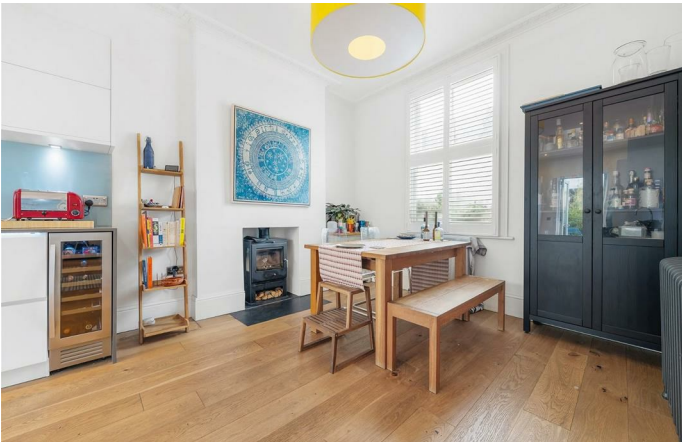
A rare offering: a charming and unique three double bedroom, double-fronted end-of-terrace Victorian house with side access to the garden. Combining these sought-after features with stylish interiors and scope to extend into the loft, this home is truly special. Peacefully located on Sulina Road, the property was meticulously refurbished in 2014, reinstating period character whilst creating a layout ideal for modern living. The handsome façade, sash windows with flower boxes, and blue front door open to a welcoming porch which leads to a contemporary hall with wooden stairwell. The ground floor offers a versatile double reception with ornate cornicing, a wood-burning stove and bi-fold doors to the garden. The separate kitchen diner has a space for a roast in front of a second fire, and a sleek kitchen boasting generous storage, a range cooker, wine fridge, and French doors to the garden. The private garden is a tranquil haven providing multiple zones for outdoor living and rare side access. Upstairs are three airy double bedrooms and a luxurious family bathroom. With plans for a loft conversion, this elegant home offers both charm and potential.

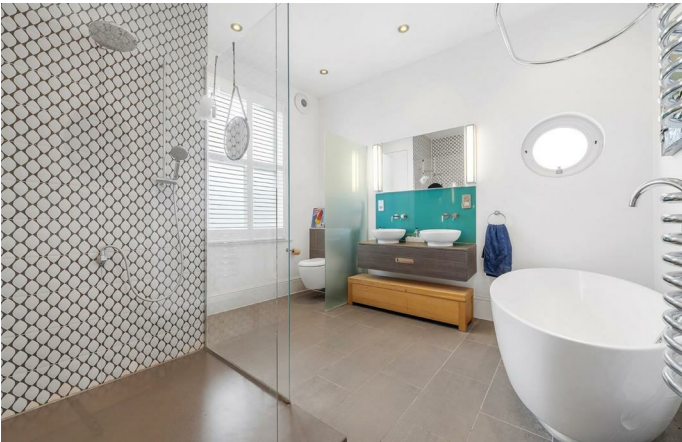
Council tax band E

EPC rating D (62)

Features

- Three double bedrooms
- Private garden with side access
- Double-fronted, end-of-terrace Victorian house
- Wood burning stoves and downstairs WC
- Beautifully presented
- Potential to extend
- Neighbourly road with proximity to Brixton, Streatham Hill and Balham
- Brixton a fifteen-minute walk or five-minute bus
- Streatham Hill an eight-minute walk
- Chain-free. Freehold.





Sulina Road, Brixton, SW2

Sulina Road, SW2

3 Bedroom House

APPROXIMATE GROSS INTERNAL AREA: **1305 SQ FT / 121 SQ M**



While we try our very best, floor plans are produced as a guide only and we take no responsibility for the precise accuracy with which any property is represented.

Sulina Road, Brixton, SW2

