



Lambert Road, Brixton, SW2

3 bedroom flat - conversion to let

£860 Per Week

Part furnished

Property Details

A fine example three-bedroom, Victorian conversion garden flat, brimming with character and located on one of Brixton's most popular residential streets. Lambert Road is located just off Brixton Hill, within close proximity to a variety of amenities. This ground floor property is located within a handsome, terraced Victorian conversion with characterful features include original wooden flooring running from the reception room through to the kitchen.

The property consists of a large reception room with bay window and high ceiling that leads to a beautifully finished kitchen which is sleek and modern, and there is also plenty of space for dining whilst over-looking the private garden. The master bedroom boasting a large bay window and plenty of space and two further double bedrooms are also of good size, two family sized bathrooms making this ideal for sharers.

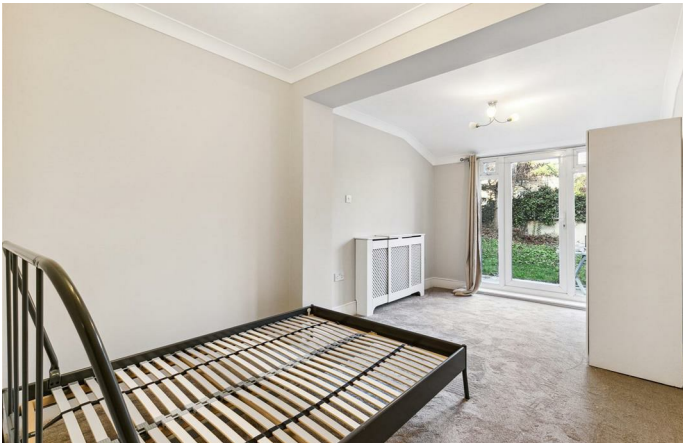
Sash windows throughout allow a plethora of light to filter into this spacious flat and allow pretty views of the ample garden, the perfect spot in which to relax or entertain during the warmer months. The flat is in great condition having refreshing mix of period features and modern design throughout.

Living here you'll benefit from all that Brixton offers, from the celebrated cuisine of Brixton Village to the music venues and nightlife the area is famous for. There are local amenities within a two-minute

Features

- Three double bedrooms
- Victorian conversion
- Garden
- Two bathrooms
- Spacious reception
- Close to Central Brixton
- Close to transport links
- Short walk to Brockwell Park

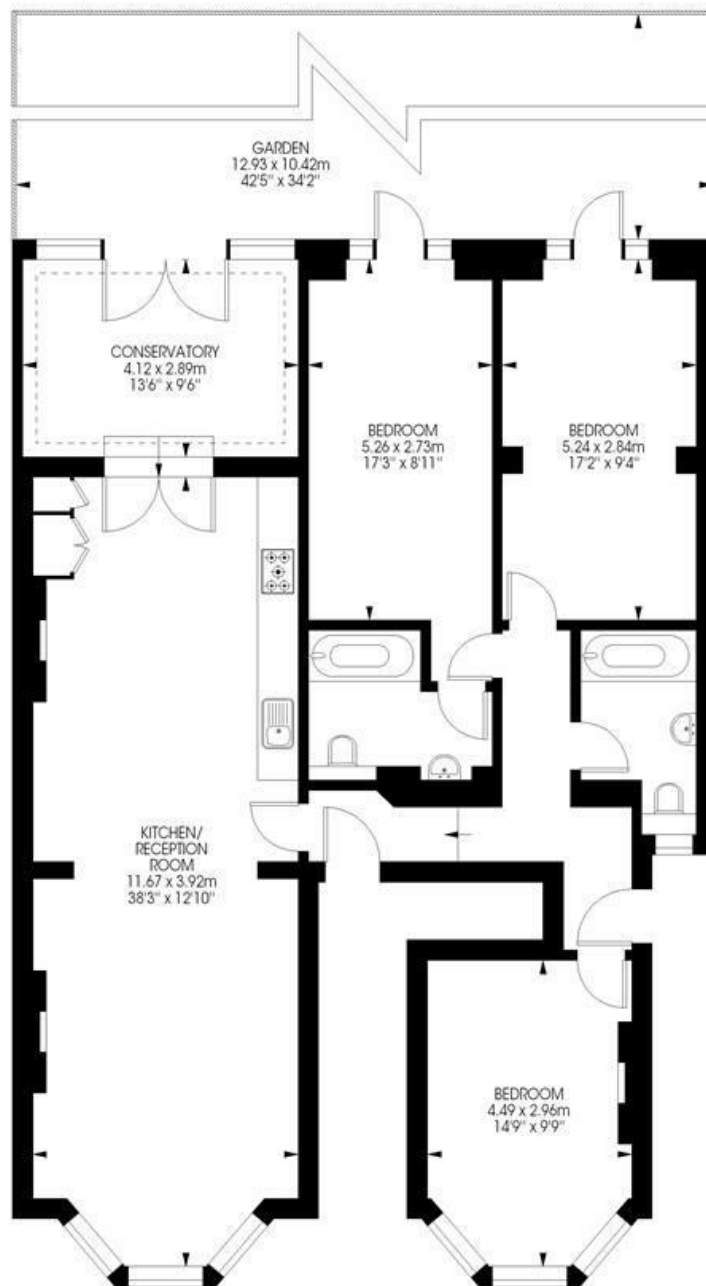
Council tax band E EPC rating D (67)



Lambert Road, Brixton, SW2

Lambert Road,
Brixton, SW2
3 bedroom flat

Approximate internal area: 1302 sqft / 121 sqm



Ground Floor



While we try our very best, floor plans are produced as a guide only and we take no responsibility for the precise accuracy with which any property is represented.

Lambert Road, Brixton, SW2

