

Horsford Road, Brixton, SW2

2 bedroom flat - conversion for sale

£500,000

Leasehold

Property Details

A charming two-bedroom Victorian flat on Horsford Road in the heart of Brixton. Set within an attractive period terrace, this beautifully presented home blends contemporary finishes with classic features, creating a stylish and comfortable living space. The heart of the home is the spacious open-plan kitchen and dining area, featuring sleek white cabinetry, wooden worktops, and modern appliances. A large bay window floods the room with natural light, offering rooftop views towards the city lights—an ideal setting for entertaining or relaxed dining. Both bedrooms are doubles, set away from the already quiet street for a peaceful retreat. Separated for privacy, they offer a blank canvas for personalisation, with the principal bedroom enjoying a particularly large window. One room could easily serve as a guest room, home office, or gym. A recently refurbished bathroom boasts a double-ended bathtub, overhead shower, stylish tiling, and a trendy ceramic sink unit. A fantastic opportunity for first-time buyers or investors, this home offers space, style, and welcoming neighbours.

Features

- Two double bedrooms
- Victorian conversion
- Bright and airy
- Neutral blank canvas
- Recently renovated bathroom
- Local amenities on the doorstep
- Central Brixton an eight-minute stroll
- Victoria line and Overground
- Brockwell Park close by
- Chain-free

Council tax band C

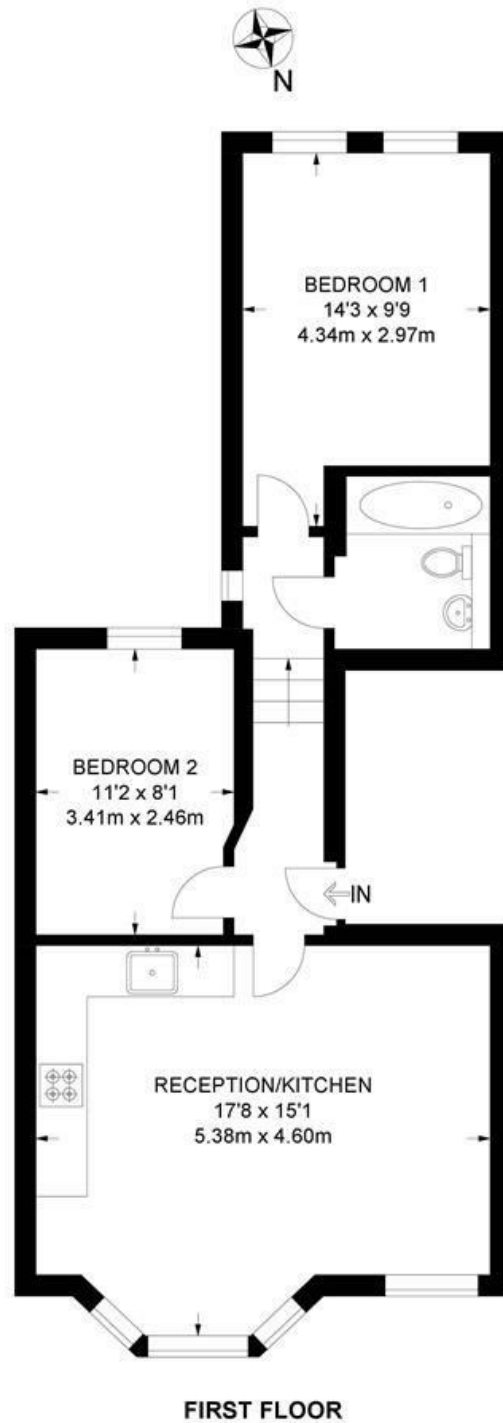
EPC rating C (69)



Horsford Road, Brixton, SW2

Horsford Road, SW2
2 Bedroom Flat

APPROXIMATE GROSS INTERNAL AREA: **552 SQ FT / 51.3 SQ M**



While we try our very best, floor plans are produced as a guide only and we take no responsibility for the precise accuracy with which any property is represented.

Horsford Road, Brixton, SW2

