

## Trent Road, SW2

2 bedroom flat - conversion to let

**£580 Per Week**

Furnished

### Property Details

A stunning, conversion flat situated on a very pretty, residential street set off Brixton Hill. The apartment sits in a large Victorian house that is only a short walk to Brockwell Park and Brixton Hill. You also have great transport links to the city with both Brixton BR and Brixton underground station close by. This split level flat comprises a spacious open plan kitchen area with ample room for dining, a separate reception area, two double bedrooms and a private patio area and is perfect for two sharers looking to take advantage of the great location!

### Features

- Two double bedrooms
- Family bathroom
- Separate reception and kitchen
- Private patio area
- Split level
- Close to transport links
- Close to Brockwell Park

Council tax band D      EPC rating D (68)



Trent Road, SW2

**K**

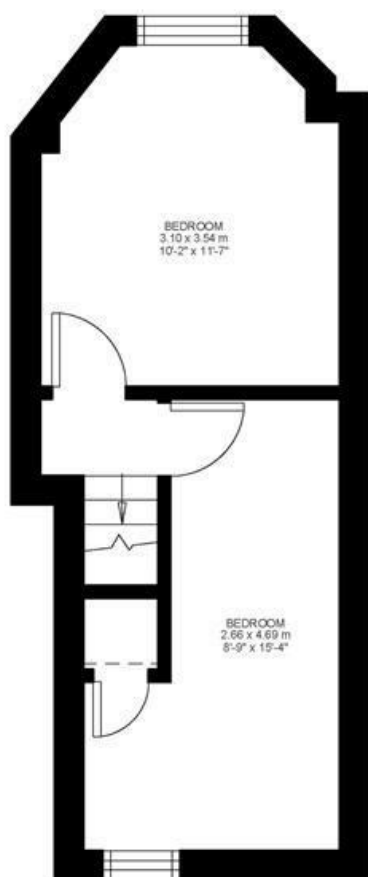
2 Bed flat

Approx internal area:

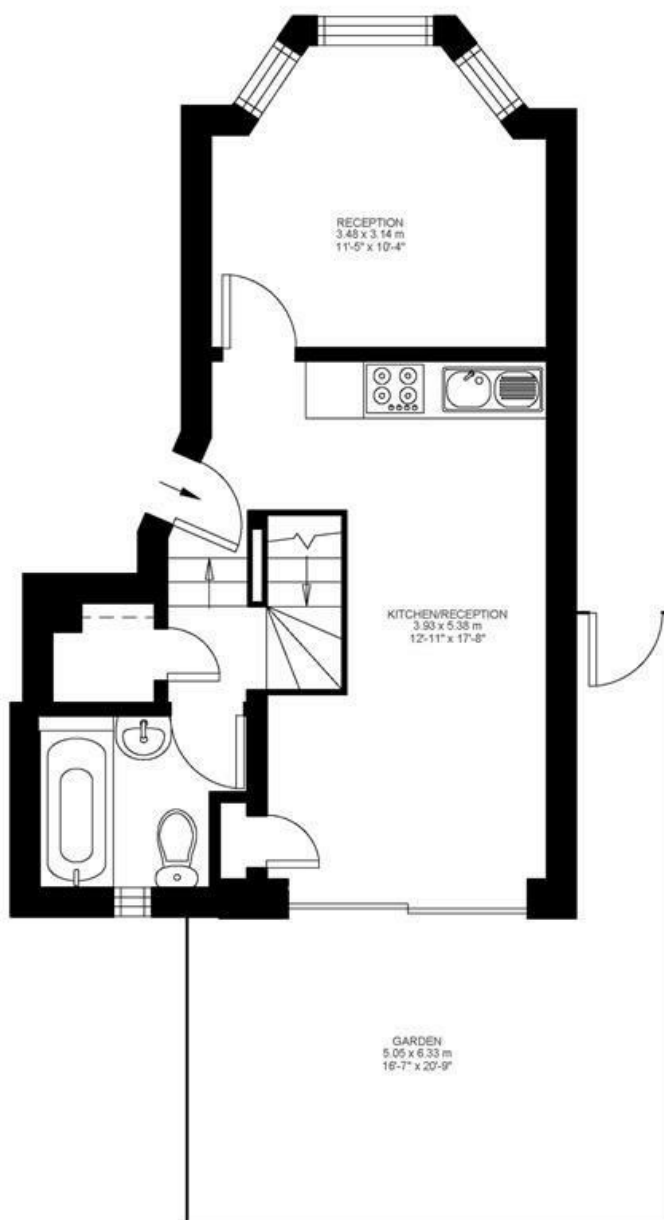
**620 sqft 58 sqm**

While we do try our very best, floor plans are produced as a guide only and we take no responsibility for the precise accuracy with which any property is represented

Trent Road



Lower Ground Floor



Ground Floor



Trent Road, SW2

