



**Leander Road, Brixton, SW2**

2 bedroom flat to let

**£438 Per Week**

Furnished

## Property Details

A beautiful, bright and airy two bedroom flat - situated around a sixteen minute walk from Brixton High Street. This property comprises two spacious double bedrooms, an open plan kitchen/living room and a sleek modern bathroom. All just a stones throw away from stunning Brockwell Park and walking distance from both Herne Hill and Brixton Stations , taking around sixteen minutes to reach each.

## Features

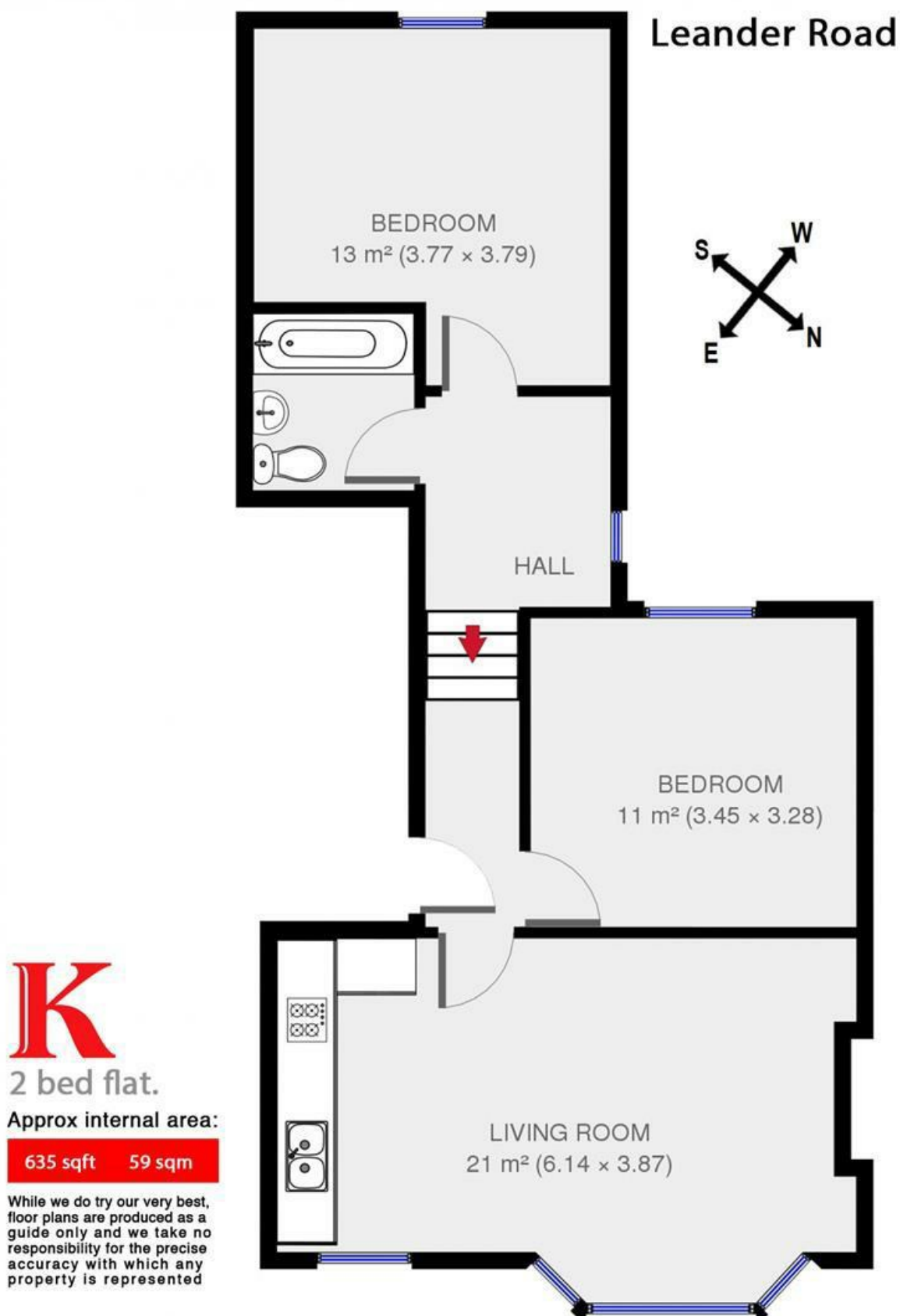
- Open Plan Kitchen and Reception
- Two Double Bedrooms
- Sixteen Minute Walk to 2 Tube Stations
- Sleek Modern Bathroom
- End of terrace
- Seven minute walk to Brockwell Park

Council tax band D      EPC rating C (69)





Leander Road, Brixton, SW2



**K**

2 bed flat.

Approx internal area:

635 sqft 59 sqm

While we do try our very best, floor plans are produced as a guide only and we take no responsibility for the precise accuracy with which any property is represented



Leander Road, Brixton, SW2

