



Tulse Hill, Brixton, SW2

1 bedroom flat - purpose built for sale

£460,000

Leasehold

Property Details

A fantastic one double bedroom apartment set back from the street with a private South-facing terrace. This impressive new home forms part of a gated development designed with attention to detail. This sizeable fourth floor apartment has a bright and airy feel, with additional privacy due to the elevated position. The expansive open-plan reception is a fantastic entertaining space with high ceilings enhancing the cavernous feel. Down lighting and timber floors in warming shades create a welcoming ambience. A sleek kitchen integrates appliances and generous storage, topped with work surfaces with worktop lighting setting an evening mood. A large pane glass door leads out to the large South-facing terrace, this low-maintenance spot is sheltered by glass balustrades, with lighting and sockets, ideal for year-round use. The bedroom is a spacious double, with a calming yet airy ambience and plush carpets. The bathroom has a bathtub with overhead shower set below a picture-frame window, with beautiful marbled tiling. The home benefits from large hallway cupboards, video entry phone, high energy efficiency and ten-year build warranty. Property has been virtually staged with furnishings.

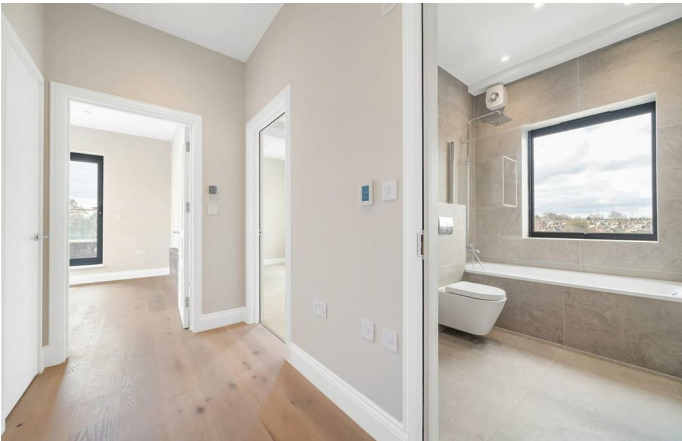
Features

- One double bedroom
- Private South-facing terrace
- Bright and airy atmosphere throughout
- New, exclusive gated development
- Over 625 square feet
- Supermarket, restaurants and cafes on the doorstep
- Central Brixton and Herne Hill both a ten-minute stroll
- Brockwell Park a four-minute walk
- 10 year build warranty
- Chain-free

Council tax band

EPC rating C (79)



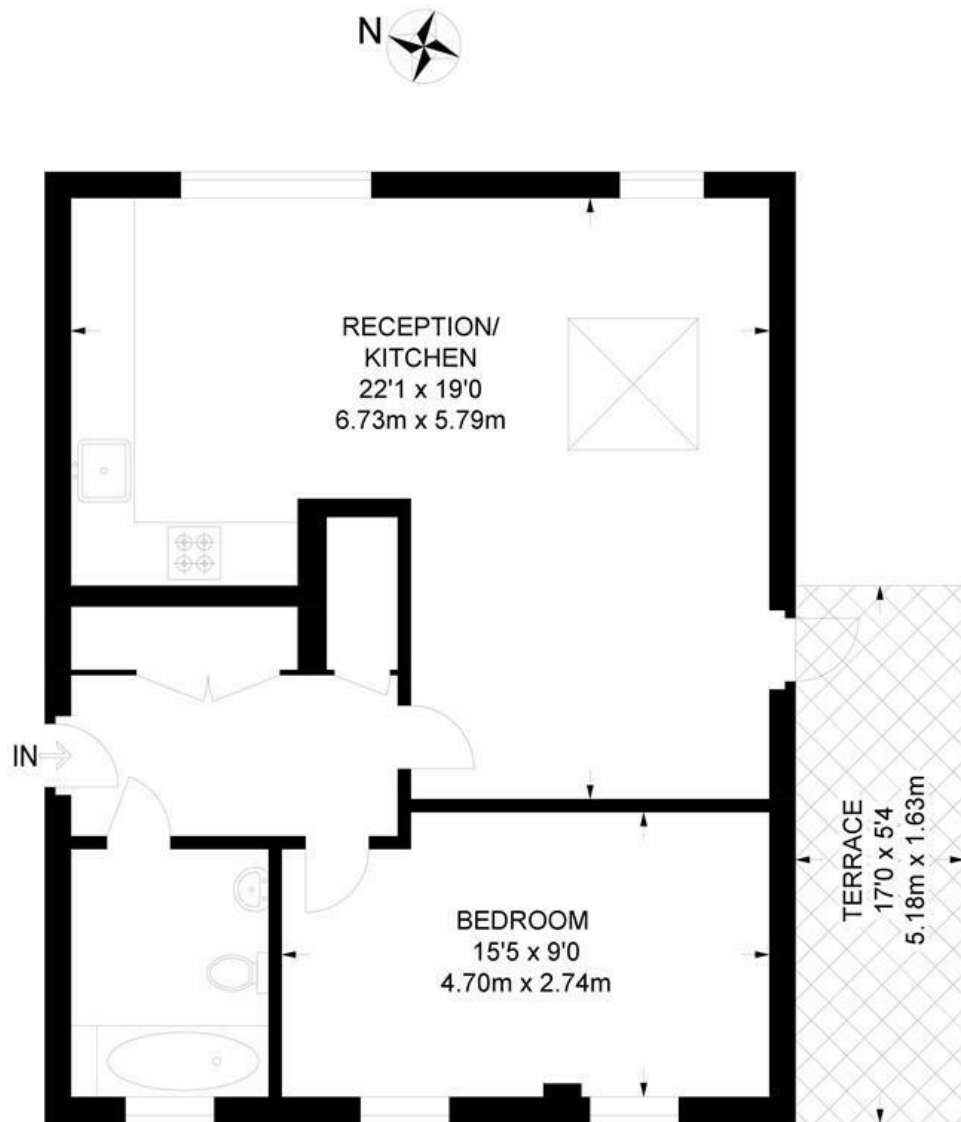


Tulse Hill, Brixton, SW2

Tulse Hill, SW2

1 Bedroom Flat

APPROXIMATE GROSS INTERNAL AREA: **628 SQ FT / 58 SQ M**



FOURTH FLOOR



While we try our very best, floor plans are produced as a guide only and we take no responsibility for the precise accuracy with which any property is represented.

Tulse Hill, Brixton, SW2

