

Haycroft Road, Brixton, SW2

4 bedroom maisonette for sale

£825,000

Leasehold

Property Details

With over 2,170 square feet on offer, this incredibly generous flat is larger than many houses in the surrounding area and being split over two floors, with front and rear entrances and the addition of a private garden, it truly does feel like a home. The current layout of the property provides three very generous double bedrooms and a further room, still a genuine double that could easily be repurposed to suit the needs of the purchaser. The eat-in kitchen offers significant storage options and surface space, plus dimensions that could accommodate a large dining table. The reception is adjacent, offering the opportunity to combine the two (subject to the necessary permissions) and create a larger open-plan living space if desired. The flat benefits from a recently refurbished family bathroom and a separate WC on the floor below. An easily accessed loft room provides ample storage. Chain-free. Brand new boiler.

Council tax band D

EPC rating D (66)

Features

- Four double bedrooms
- Private South-facing garden
- Over 2,170 square feet
- Split-level, first and second floors
- Victorian, double-fronted, end-of-terrace conversion
- Stamp your own mark
- Local amenities of Brixton Hill
- Walking distance to Northern and Victoria lines
- Walking distance to Brockwell Park
- Chain-free



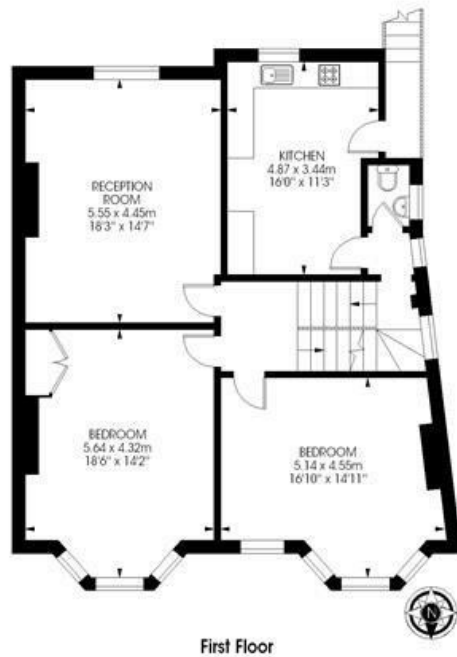
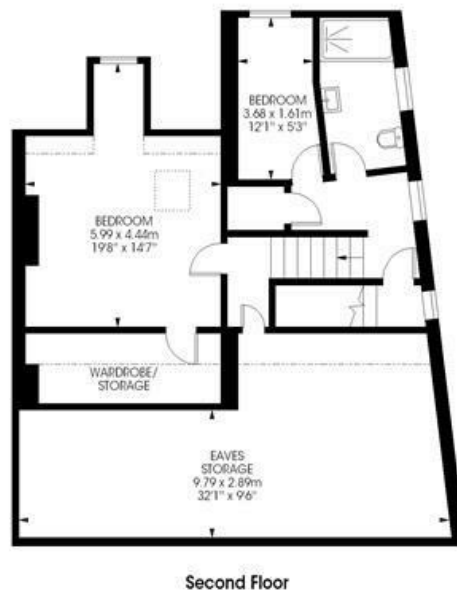
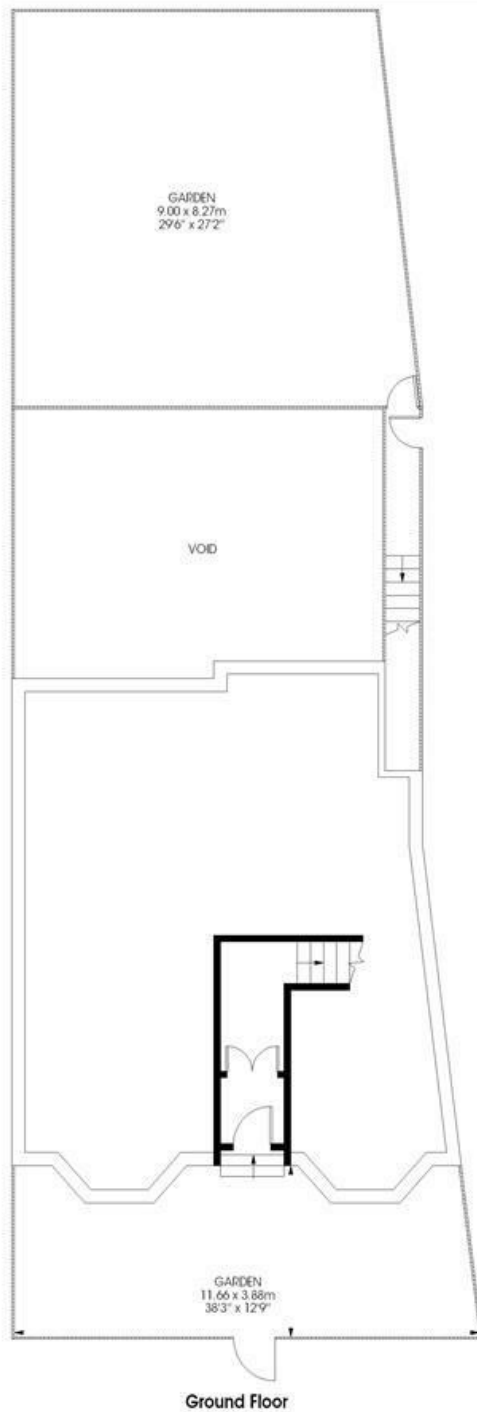
Haycroft Road, Brixton, SW2

Haycroft Road,
Brixton, SW2
4 bedroom flat

Approximate internal area: 2174 sqft / 202 sqm

(Including Eaves Storage)

Approximate Eaves Storage area: 388 sqft / 36 sqm



While we try our very best, floor plans are produced as a guide only and we take no responsibility for the precise accuracy with which any property is represented.

Haycroft Road, Brixton, SW2

