

**Hayter Road, SW2**

1 bedroom flat - conversion to let

**£380 Per Week**

Unfurnished

## Property Details

Superb one double bedroom flat with a private garden set on the ground floor in an attractive Victorian conversion on a desirable road in central Brixton.

Hayter Road is within a sought-after residential pocket of streets, tucked away off Brixton Hill between Brixton and Clapham. Situated close to the heart of Brixton, a seven-minute stroll from The Ritzy, Windrush Square, Brixton Village and POP Brixton, this property is perfect for anyone who wants to be close to the action but would prefer to retain a sense of calm.

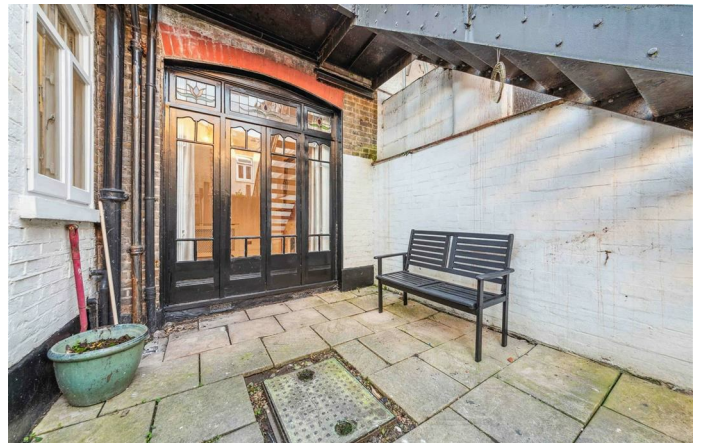
At the front of the property sits the well-proportioned spacious double bedroom. The modern kitchen is tastefully finished and has plenty of work top space. Down the hallway tucked away is the spacious reception room, with high ceilings and that create a light and airy atmosphere with doors that open up onto the side return and garden for you to enjoy during the summer months.

The property is a short stroll to the centre of Brixton, with vibrant Brixton Hill on your doorstep and first stop on the Victoria Line at the tube station, just a seven-minute walk away. In the other direction, you will benefit from everything that Clapham has to offer within a ten-minute stroll, the multitude of restaurants and bars and excellent transport links with two Northern Line underground stations; Clapham Common and Clapham North tube stations. Brockwell Park and it's iconic 1930's Lido are a

## Features

- One bedroom
- Period conversion
- Ground floor flat
- Spacious
- Private Garden
- Close to Brixton Village
- Close to transport links

Council tax band C      EPC rating D (66)



Hayter Road, SW2

Hayter Road, SW2

