



Hayter Road, Brixton, SW2

2 bedroom flat - conversion for sale

£625,000

Share of Freehold

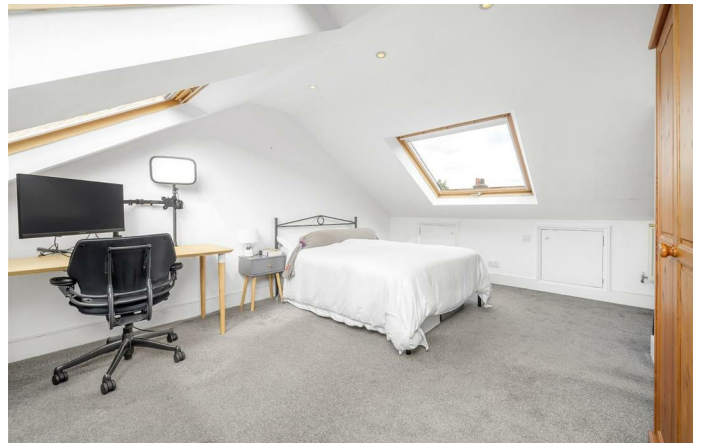
Property Details

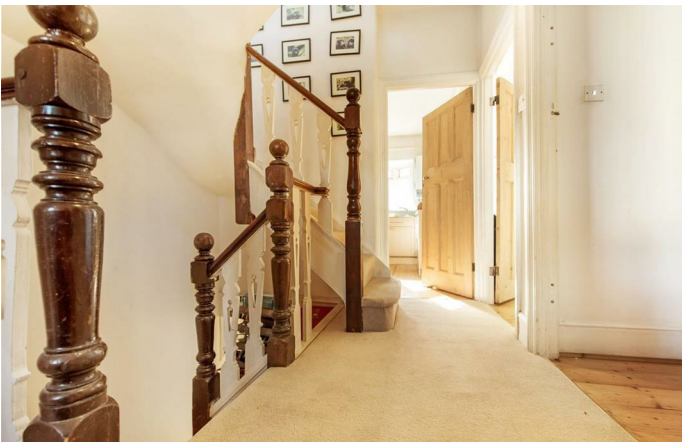
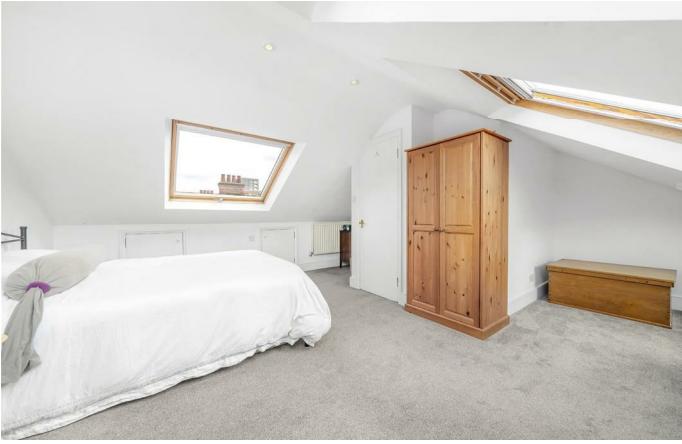
A unique two double bedroom apartment with a private garden, set over the upper floors of an Edwardian property. This spacious flat has a lovely rustic style and a versatile layout. The reception is inviting, packed full of characterful grandeur and drenched in light from glass French doors leading to a step-out terrace, with steps to the private garden. Decked for ease of maintenance the garden is a lovely spot in which to while away the summer, with a rear gate for bikes, which could also be stored in the entryway. The kitchen is a practical space with a basis of great features and ample storage within shaker cabinetry, with worktops wrapping around. Both bedrooms are spacious doubles, set on differing floors. The bedroom on the first floor has great dimensions and is packed full of character. Stairs wind up to the second bedroom, another large space this converted loft is peacefully tucked away with lovely light thanks to multiple skylights with city views across the rooftops. The bathroom is traditionally styled with attractive tiling and a bathtub with overhead shower. The WC sits adjacent, with the potential to combine into one room or keep separate for busy morning routines. Storage is within the eaves and on the downstairs landing.

Features

- Two double bedrooms
- Private terrace and garden
- Characterful Edwardian conversion
- First floor, split-level flat
- Over 875 square feet
- Bright and airy
- Desirable residential road
- Central Brixton a five-minute stroll
- Victoria and Northern Lines
- Chain-free and share of freehold

Council tax band C EPC rating C (69)





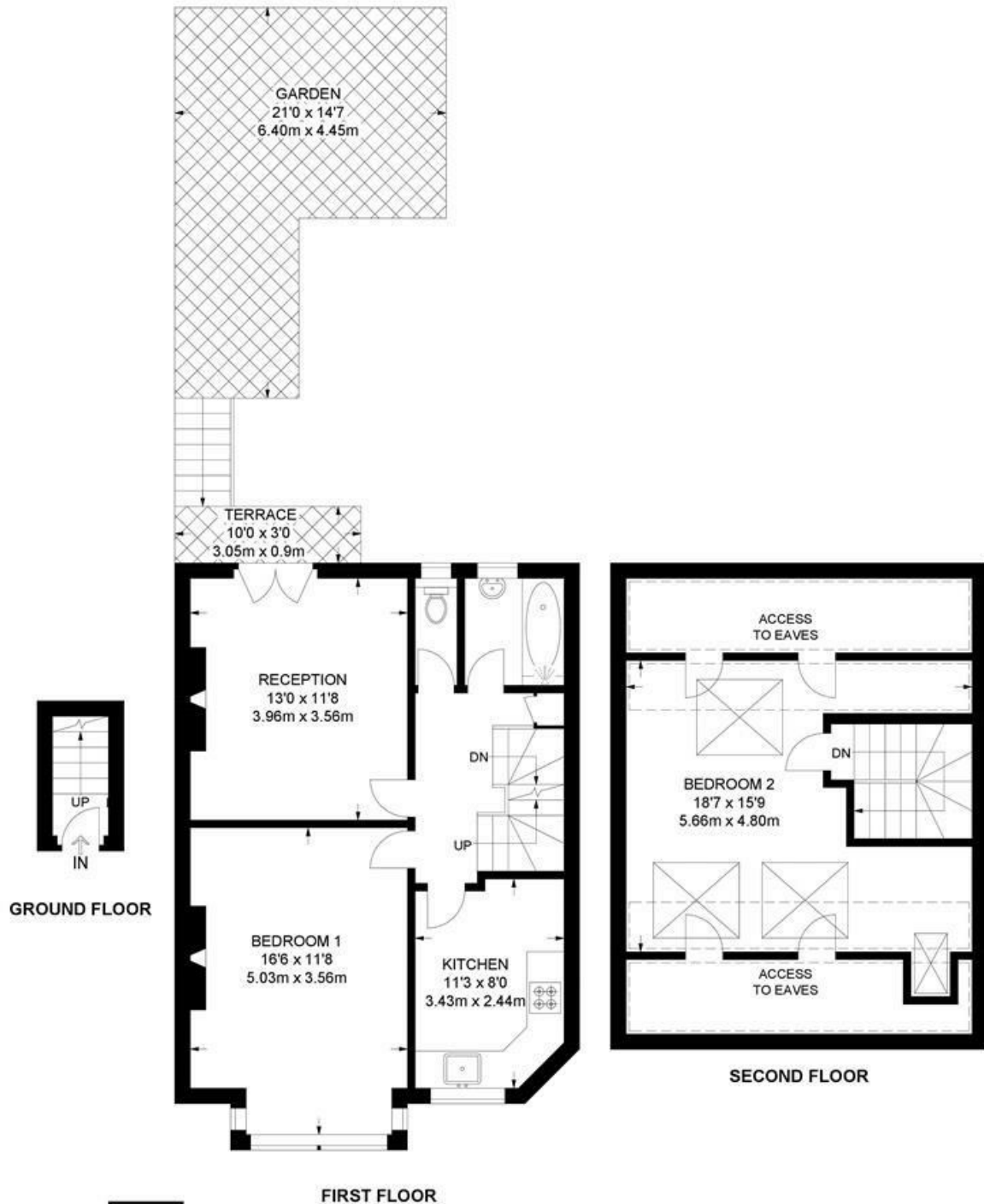
Hayter Road, Brixton, SW2

Hayter Road, SW2

2 Bedroom Flat

APPROXIMATE GROSS INTERNAL AREA WITH EAVES: **1042 SQ FT / 96.8 SQ M**

APPROXIMATE GROSS INTERNAL AREA WITHOUT EAVES: **877 SQ FT / 81.5 SQ M**



While we try our very best, floor plans are produced as a guide only and we take no responsibility for the precise accuracy with which any property is represented.

Hayter Road, Brixton, SW2

