



**Jebb Avenue, SW2**

4 bedroom flat - purpose built to let

**£784 Per Week**

Furnished

## Property Details

A spacious four double bedroom apartment, this spacious property on Jebb Avenue is situated quietly just off Brixton Hill, perfectly located for anyone wanting to be close to the action yet far enough away to retain a sense of calm. Brixton town centre and Brixton Village are a stroll down Brixton Hill or a five-seven minute bus ride. Brockwell Park is approximately a ten-minute walk, which many local residents champion as one of London's best parks, across which is Herne Hill station within a fifteen-minute walk. Brixton Hill is a stone's throw, with its brilliant array of cafes, pubs and restaurants, such as F Mondays, Pizza Brixton, and the White Horse pub, to name a few. Living here you will benefit from all that Brixton offers, from the celebrated cuisine in POP Brixton to the music venues and nightlife the area is famous for and first stop on the Victoria Line at Brixton tube station.

The apartment comprises a spacious separate living room which is flooded with natural light through large windows and leads out to your own private balcony. The kitchen which has ample storage and all you need in terms of mod cons. All four double bedrooms are all spacious and similar in size, making this property perfect for professional sharers. Last but not least the modern bathroom has a warm and inviting feel, the property has the added benefit of an additional storage cupboard.

## Features

- Four double bedrooms
- Separate reception room
- Private Balcony
- Spacious
- Close to transport links
- Short walk to Brockwell Park
- Close to central Brixton

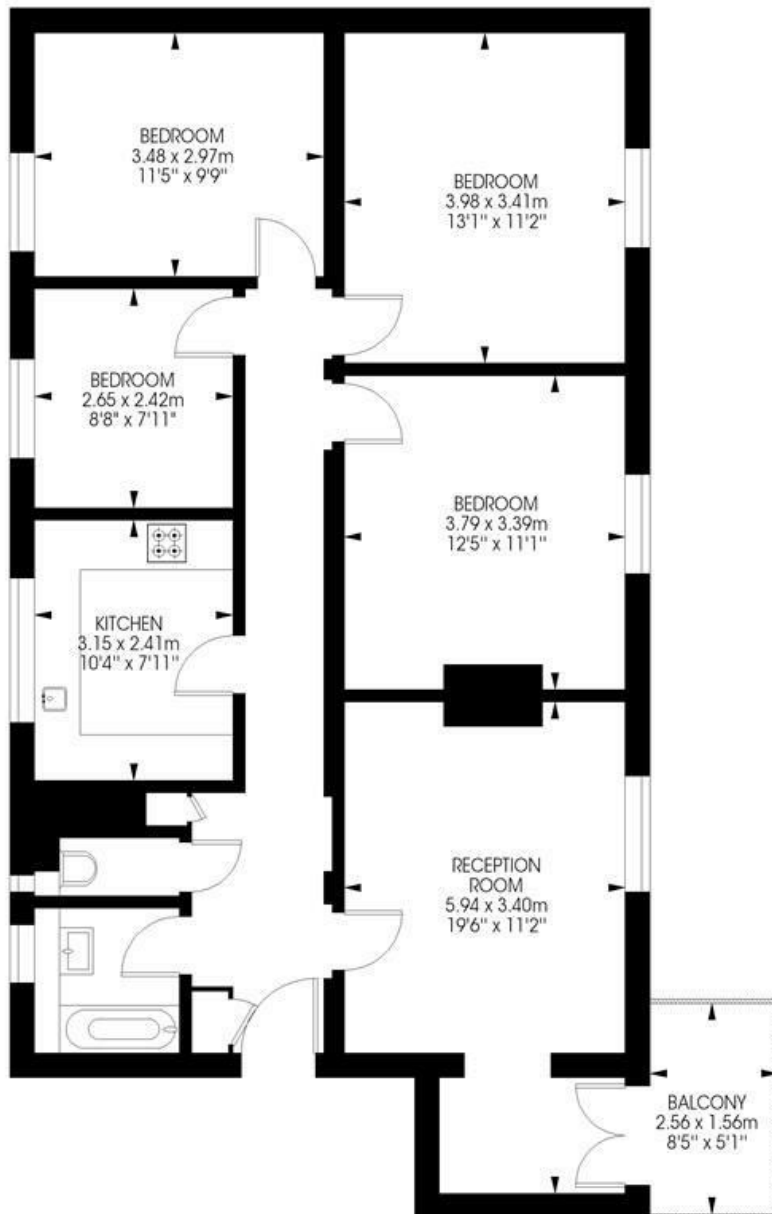
Council tax band A    EPC rating D (59)



Jebb Avenue, SW2

Jebb Avenue,  
Brixton, SW12  
4 bedroom flat

Approximate internal area: **990 sqft / 92 sqm**



Second Floor



While we try our very best, floor plans are produced as a guide only and we take no responsibility for the precise accuracy with which any property is represented.

Jebb Avenue, SW2

