

Dudley Mews, Brixton, SW2

2 bedroom flat - purpose built for sale

£475,000

Leasehold

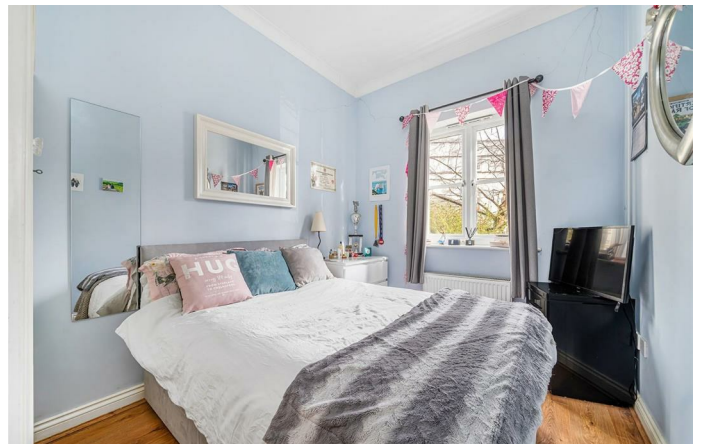
Property Details

This lovely two bedroom, two bathroom flat with allocated parking is quietly tucked away in a friendly gated community with an entrance onto Brockwell Park. The heart of the home is the semi-open-plan reception room; the lounge area enjoys leafy views and the kitchen is well-equipped. The principal bedroom is a large double with built-in wardrobes and a roomy en-suite, still a genuine double, the second bedroom is located adjacent. A second family bathroom completes the interior of this charming home. With the bedrooms quietly separated away from the social spaces, this property is ideal for sharers or couples looking for a space to grow into. Rare further benefits include allocated off-street parking and the development's entrance straight into Brockwell Park. Dudley Mews is part of a neighborly setting with ease of access to both Herne Hill and Brixton.

Council tax band D EPC rating D (61)

Features

- Two bedrooms
- Two bathrooms
- Off-street parking
- Secure gated development
- Entrance onto Brockwell Park
- Local amenities and eateries
- Herne Hill a twelve-minute stroll across the park
- Brixton a fifteen-minute walk away
- Victoria Line and Thameslink services

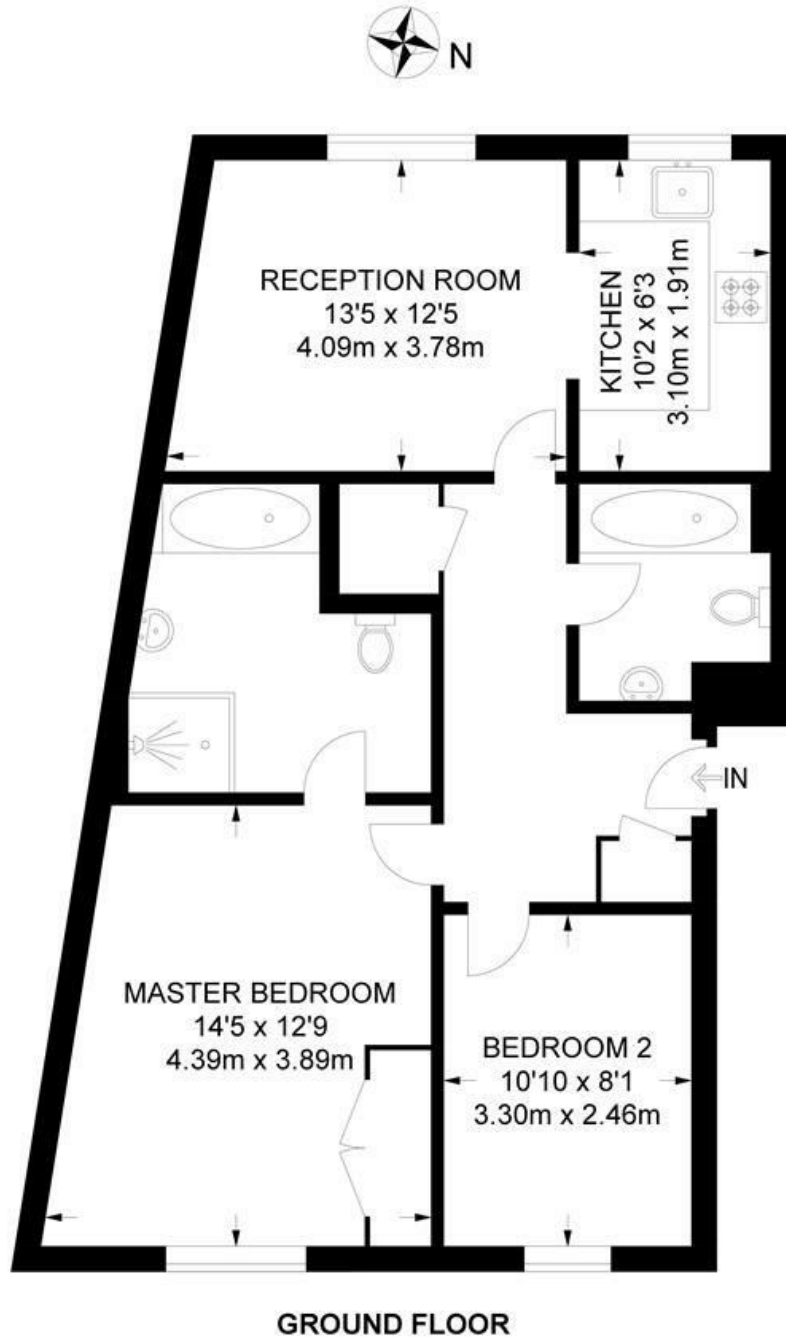


Dudley Mews, Brixton, SW2

Dudley Mews, SW2

2 Bedroom Flat

APPROXIMATE TOTAL INTERNAL AREA: 700 SQ FT / 65 SQ M



While we try our very best, floor plans are produced as a guide only and we take no responsibility for the precise accuracy with which any property is represented.

Dudley Mews, Brixton, SW2

