



Mayall Road, Herne Hill, SE24

1 bedroom flat - conversion to let

£380 Per Week

Furnished

Property Details

A beautifully presented, split level one bedroom garden flat in a Victorian conversion located in the ever-popular Poets Corner. This sleek flat comprises a reception room to the front with wooden flooring and a bay window flooding the room with natural light. Adjacent lies a well-proportioned double bedroom with a nice view of the rear garden. Downstairs leads to the modern bathroom and a separate modern kitchen. The property has the added benefit of ample storage and a utility room which leads directly to the shared garden. Living here you'll be around an 8 minute walk away from beloved Brockwell park, around an eleven minute walk to Brixton underground and around a nine minute walk to Herne Hill station.

Features

- One double bedroom
- Victorian conversion
- Split-level
- Separate kitchen
- Around an 8 minute walk to Brockwell park
- Shared garden
- Around an 11 minute walk to Brixton underground

Council tax band B EPC rating D (66)





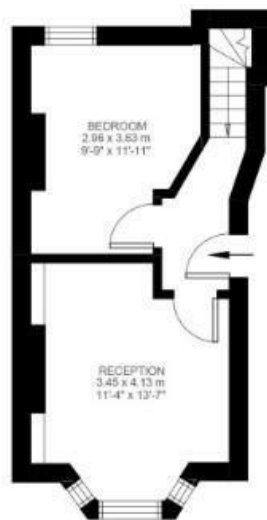
Mayall Road

1 Bedroom Flat

Approx internal area:

635 sqft 59 sqm

While we do try our very best, floor plans are produced as a guide only and we take no responsibility for the precise accuracy with which any property is represented



Ground Floor



Lower Ground Floor



Mayall Road, Herne Hill, SE24

