



Lambert Road, Brixton, SW2

3 bedroom flat - conversion for sale

£735,000

Leasehold

Property Details

An attractive three double bedroom, two bathroom apartment nestled within a grand double-fronted Victorian house on a tree-lined residential street. Boasting over 900 square feet the property has well-proportioned rooms and a layout which maximises the flow of natural light. The inviting open-plan reception is nestled behind a large sash bay window, featuring high ceilings with charming corncicing. The kitchen boasts storage and integrated appliances within contemporary gloss cabinetry, finished with feature worktop lighting to create a pleasant evening ambience suited to hosting at the table. A rarity for period conversions, all three bedrooms are doubles. Two are nestled to the rear with leafy views, one also boasting an en-suite. The largest of the bedrooms has a large sash window, separated from the social spaces by the generous hallway which is currently a handy home office - a versatile space which can be re-purposed to suit needs. The luxurious main bathroom is next to the second bedroom, with contemporary tiling and a bathtub plus overhead shower. Completing the interior of this fantastic, adaptable home is further storage in the hallway and bike storage in a secure side passage outside.

Council tax band D

EPC rating D (68)

Features

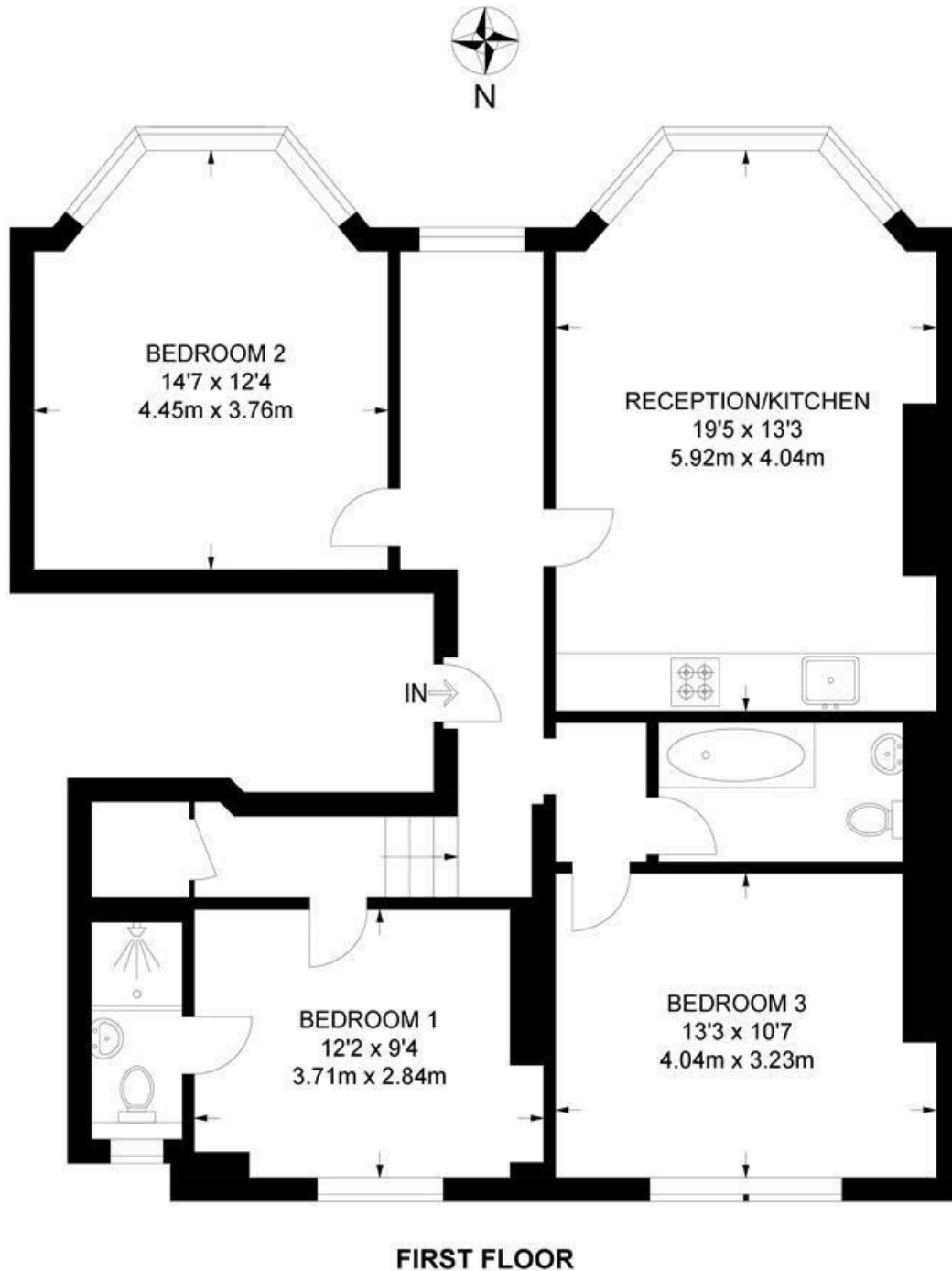
- Three double bedrooms
- Two bathrooms
- Double-fronted Victorian conversion
- Over 900 square feet
- Bike storage
- Sought-after road equidistant to central Brixton and Clapham
- Local amenities and eateries on the doorstep
- Brockwell Park a short stroll
- Walking distance to Victoria and Northern Lines
- Chain-free



Lambert Road, Brixton, SW2

Lambert Road, SW2
3 Bedroom Flat

APPROXIMATE GROSS INTERNAL AREA: **910 SQ FT / 84.5 SQ M**



While we try our very best, floor plans are produced as a guide only and we take no responsibility for the precise accuracy with which any property is represented.

Lambert Road, Brixton, SW2

