



Rushcroft Road, Brixton, SW2

2 bedroom flat - purpose built for sale

£750,000

Share of Freehold

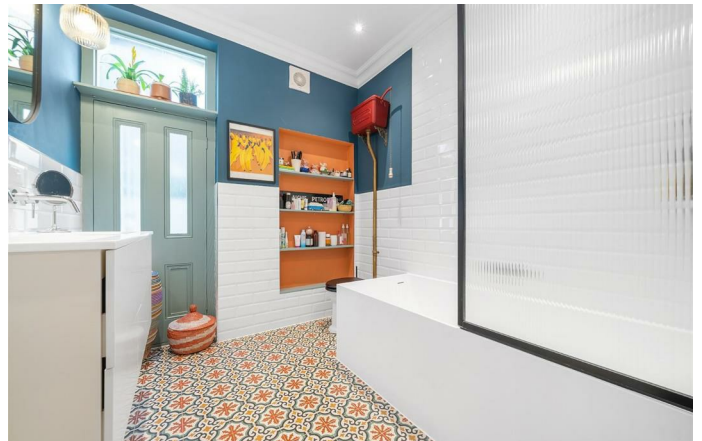
Property Details

A fantastic two double bedroom Victorian apartment in a desirable building on a one-way residential cul-de-sac. Packed full of original features with wooden floors, high, corniced ceilings plus smoked bronze and brass switches. Now features in their own right, are the upgraded radiators. A grand room, the reception is bursting with charm with an abundance of space to unwind. A separate dine-in kitchen is the ideal entertaining space. Fully integrated, the kitchen is tucked around the corner, keeping dishes out of sight whilst maintaining a sociable vibe. Thoughtfully designed the kitchen has plentiful storage, with Italian stone tiling and worktop lighting. Soothingly presented, both bedrooms are spacious doubles with built-in wardrobes, separated from one another for privacy. The bathroom has been renovated to include double sinks and Thematic rain shower over a two-person stone bathtub. A Thomas Crapper toilet replicates the Victorian original including illustrations in the pan. Vibrant décor compliments the tiled floor, with underfloor heating. A large yard is paved for ease of maintenance with a flourish of pot plants, bike storage and space to unwind with a friendly neighbour with whom this spot is shared.

Features

- Two double bedrooms
- Shared garden with bike storage
- Victorian mansion building
- Over 900 square feet
- Spectacularly presented throughout
- Packed full of character
- One-way residential cul de sac
- Central Brixton on the doorstep
- Brockwell Park and Lido a thirteen-minute walk
- Victoria Line a five-minute stroll

Council tax band C EPC rating C (72)

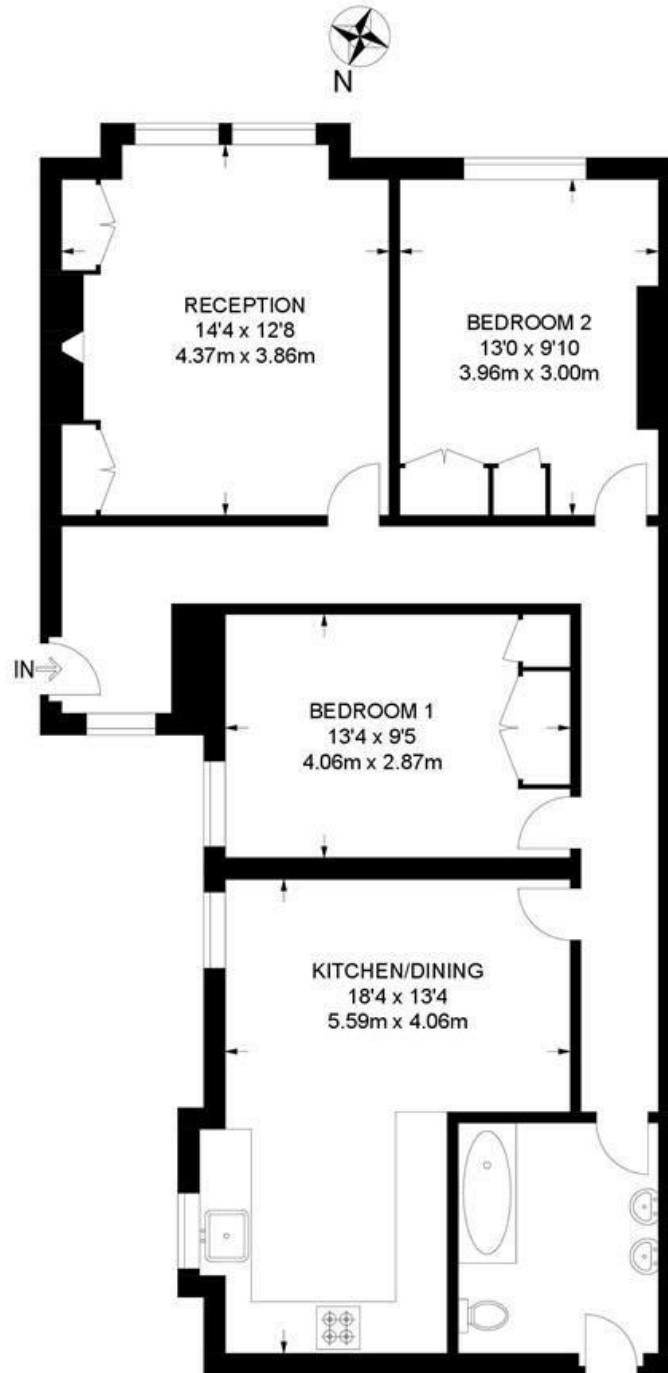




Rushcroft Road, Brixton, SW2

Rushcroft Road, SW2
2 Bedroom Flat

APPROXIMATE GROSS INTERNAL AREA: **908 SQ FT / 84.4 SQ M**



GROUND FLOOR



While we try our very best, floor plans are produced as a guide only and we take no responsibility for the precise accuracy with which any property is represented.

Rushcroft Road, Brixton, SW2

