



Acre Lane, Brixton, SW2

2 bedroom flat to let

£519 Per Week

Furnished

Property Details

A sleek and light two double bedroom flat situated in the heart of Brixton

Features

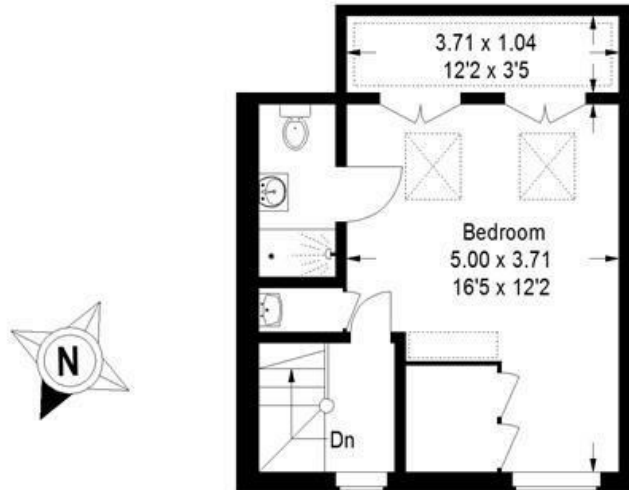
- Light and airy
- 2 double bedrooms
- 10 minute walk to Brixton Rube station
- 10 minute walk to Clapham North station
- Open plan kitchen/ reception
- Close to bars, restaurants and supermarkets

Council tax band C EPC rating C (70)




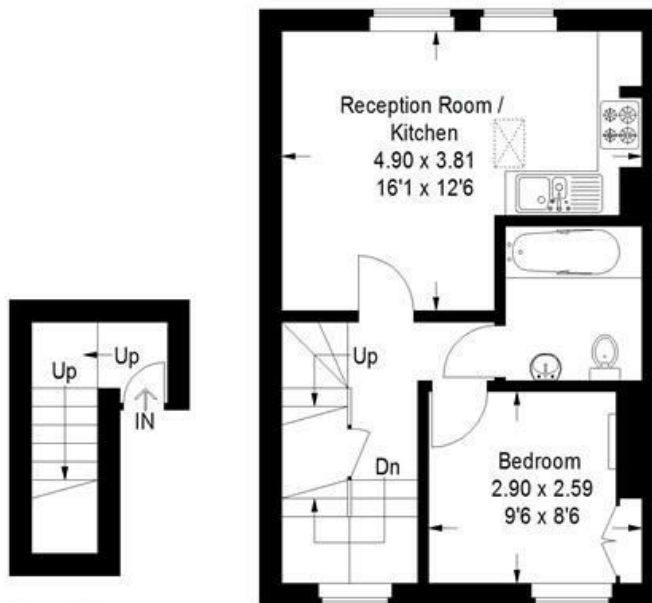
Acre Lane, SW2

Approximate Gross Internal Area
 First Floor = 3.8 sq m / 41 sq ft
 Second Floor = 36.8 sq m / 396 sq ft
 Top Floor = 28.9 sq m / 311 sq ft
 Total = 69.5 sq m / 748 sq ft



Top Floor

 = Reduced headroom below 1.5 m / 5'0



First Floor

Second Floor

This plan is for layout guidance only. Not drawn to scale unless stated. Windows and door openings are approximate. Whilst every care is taken in the preparation of this plan, please check all dimensions, shapes and compass bearings before making any decisions reliant upon them. (ID188191)

Acre Lane, Brixton, SW2

