



Leander Road, Brixton, SW2

2 bedroom flat - conversion for sale

£675,000

Share of Freehold

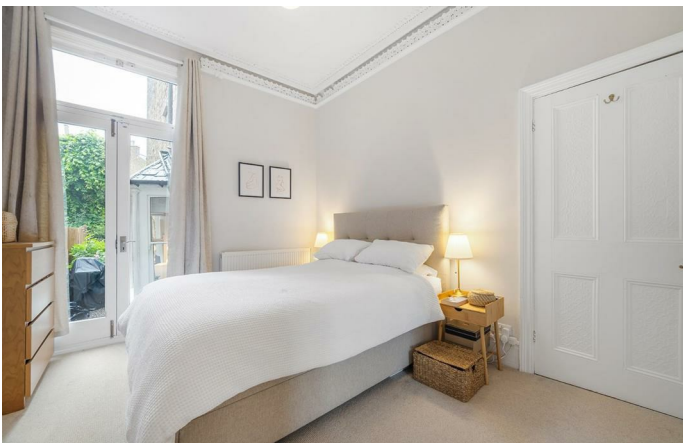
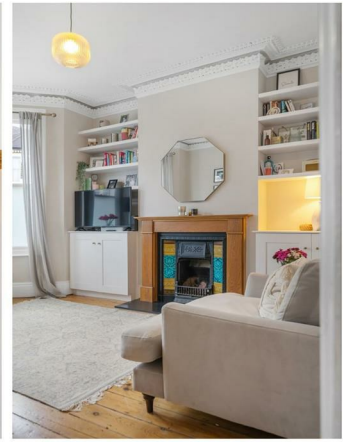
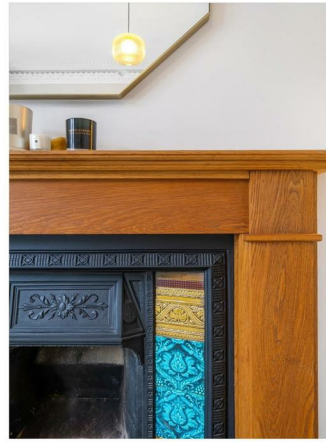
Property Details

An elegant two double bedroom garden flat in a handsome Victorian terrace on a popular residential street in the LTN with an annual street party. Well-located for the amenities and transport links of Brixton, yet far enough away to retain a sense of calm. This beautifully airy apartment is wonderfully presented, an inviting reception is packed full of character creating a lovely ambience in which to unwind. A separate dine-in kitchen benefits from a large skylight and bi-folding doors that allow light to flood the room, creating an airy atmosphere and ease of transition to the outdoors. There is plenty of room for a large dining table, perfect for entertaining. The private wrap-around garden is landscaped to provide a patio area for al-fresco dining with a raised lawn boasting all-year round greenery. Both double bedrooms are peacefully nestled to the rear, particularly spacious the principal has built-in wardrobes and relishes direct access to the garden via French doors. The second bedroom is also a good size, benefitting from a charming bay window. Separating the two bedrooms for a desirable level of privacy is the contemporary bathroom, with a bathtub plus overhead shower. This stunning home also boasts a spacious cellar.

Council tax band C EPC rating D (67)

Features

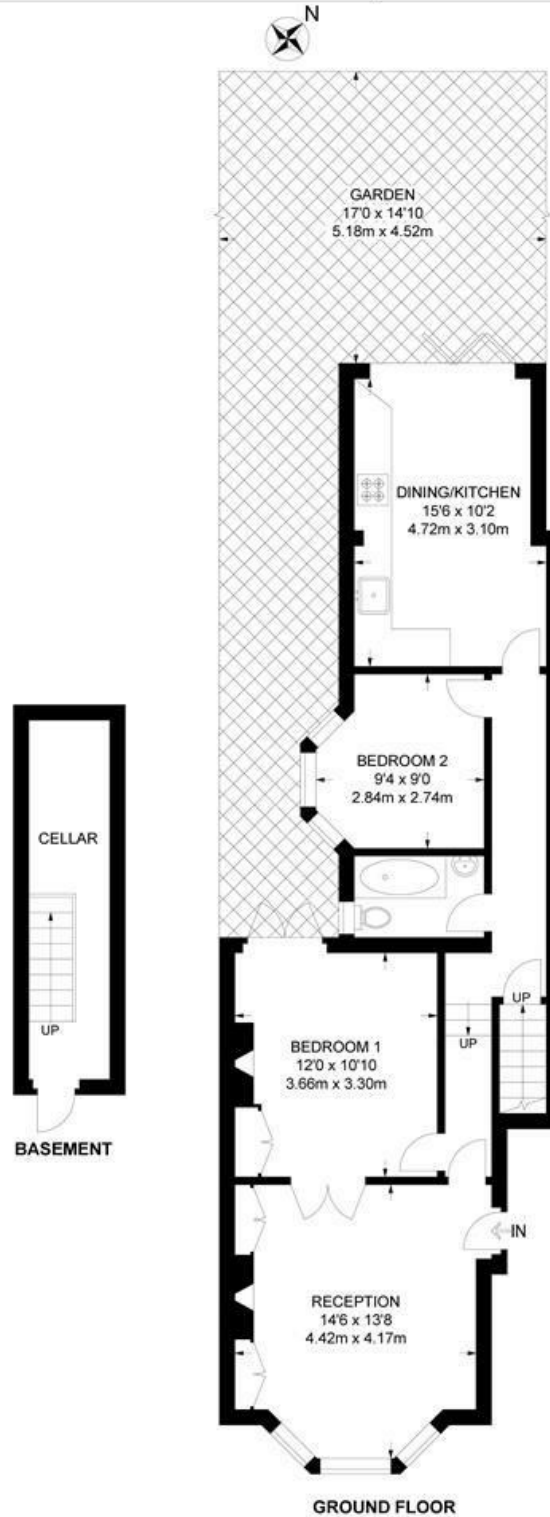
- Two double bedrooms
- Private landscaped garden
- Victorian conversion in the Josephine Conservation Area
- Characterful features
- Over 750 square feet
- Central Brixton and Herne Hill both a fifteen-minute walk
- Brockwell Park a five-minute stroll
- Large brand supermarket in five minutes
- Victoria Line, Overground and Trains
- Share of freehold



Leander Road, Brixton, SW2

Leander Road, SW2
2 Bedroom Flat

APPROXIMATE GROSS INTERNAL AREA: 778 SQ FT / 72.3 SQ M (INCLUDING CELLAR)



While we try our very best, floor plans are produced as a guide only and we take no responsibility for the precise accuracy with which any property is represented.

Leander Road, Brixton, SW2

