

Branksome Road, Brixton, SW2

2 bedroom flat to let

£507 Per Week

Furnished

Property Details

A beautiful, bright and open plan two bedroom flat - situated on a tree lined residential road and a short walk from Brixton Station. This stunning property comprises two spacious double bedrooms, a generous living area/kitchen space and a sleek modern bathroom. The Flat also boasts a private terrace, providing a serene escape from the hustle and bustle of the local surroundings of Brixton Town - where you can find a plethora of restaurants, bars, shops and entertainment.

Features

- Two Bedrooms
- Furnished
- Private roof terrace
- Good Transport Links
- Open Plan
- Light and Airy
- Close to Brixton Station
- Short walk from Brockwell Park

Council tax band C EPC rating D (65)





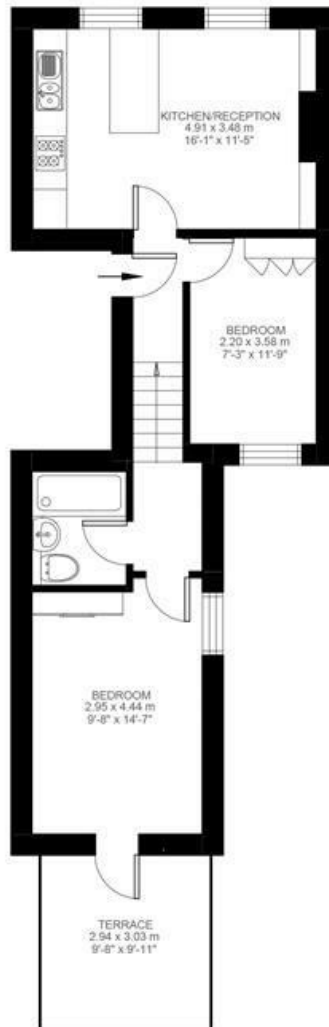
Branksome Road

2 Bedroom Flat

Approx internal area:

525 sqft 49 sqm

While we do try our very best, floor plans are produced as a guide only and we take no responsibility for the precise accuracy with which any property is represented



First Floor



Branksome Road, Brixton, SW2

