

Brading Road, Brixton, SW2

2 bedroom flat - conversion for sale

£479,950

Leasehold

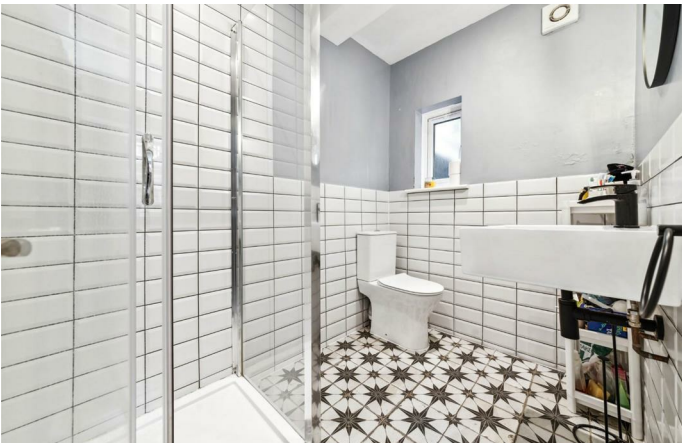
Property Details

With a versatile layout, homely feel and characterful features this appealing flat is ready to move into with the potential to add your own stamp. An attractive reception is nestled in the heart of the property offering ample proportions in which to unwind in front of the fireplace, with wooden flooring. The separate kitchen leads off, enjoy cooking up a tasty treat with views of the garden. The private wrap-around garden is South-West facing and decked for easy maintenance. Enjoy al-fresco dining, or roll up your sleeves and convert the garden to lawn and vegetable patches if desired. The principal bedroom is currently being utilised as a second reception. Set behind a large bay window this pretty room boasts high ceilings adding to the bright ambience, with proportions for a double bedroom if preferred. Still a generous double, the second bedroom has space for wardrobes, a feature fireplace and sash window with garden views. Neutrally presented, the bathroom is equipped with a walk in shower and an attractive feature floor tile.

Features

- Two double bedrooms
- Private South-West facing garden
- Victorian conversion
- Separate kitchen and reception
- Local pub, bakery and amenities on doorstep
- Brockwell Park a short stroll away
- Walking distance to Brixton and Herne Hill
- Access to the Victoria Line, Thameslink and Overground
- Chain-free

Council tax band C EPC rating D (68)

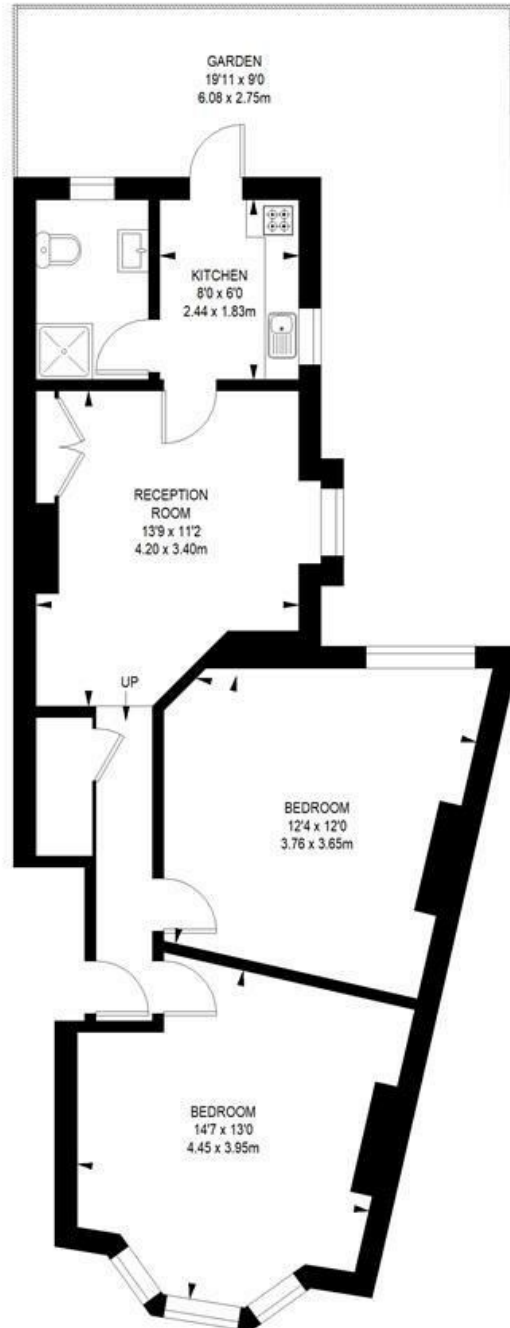


Brading Road, Brixton, SW2

Brading Road, SW2

2 bedroom flat

APPROXIMATE GROSS INTERNAL AREA: 649 SQ FT / 60.29 SQ M



GROUND FLOOR



While we try our very best, floor plans are produced as a guide only and we take no responsibility for the precise accuracy with which any property is represented.

Brading Road, Brixton, SW2

