



Brockwell Park Row, Brixton, SW2

5 bedroom house - end terrace for sale

£1,400,000

Freehold

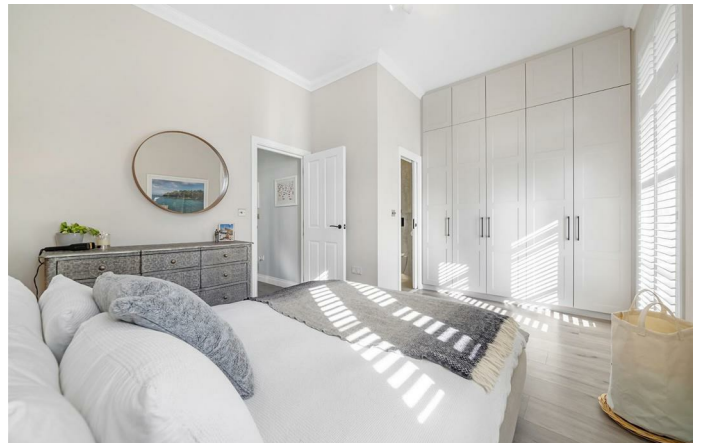
Property Details

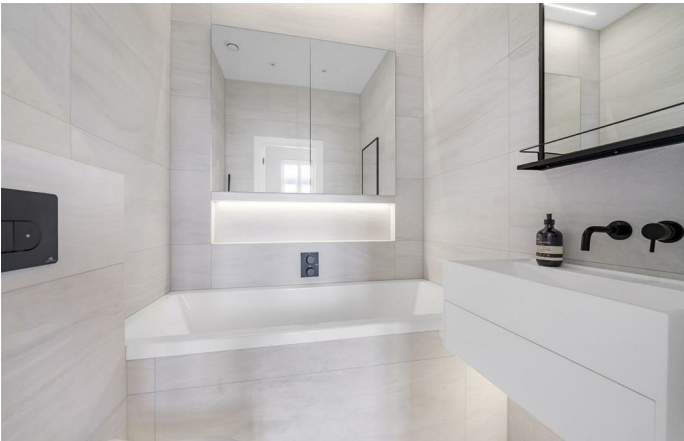
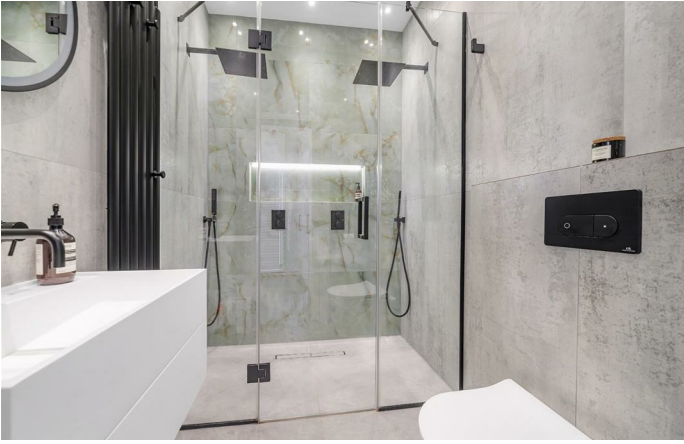
An exceptional five bedroom, four bathroom house overlooking Brockwell Park, within a private gated development with two off-street parking spaces. This stunning end of terrace house has been meticulously renovated to create a functional yet breathtaking home with hotel-grade bathrooms. High ceilings and natural light are recurring themes. The reception is homely and easy to keep neat with a built in cloak room and handy WC adjacent. The expansive bespoke kitchen diner has high-end finishes and underfloor heating plus a utility under the stairs. Bi-fold doors offer a seamless transition to the landscaped private garden, with a side gate, hot water hose, E-bike charging, storage room, floating benches and planters, plus a gate into Brockwell Park less than ten-seconds away. The principal bedroom suite is the epitome of luxury, a truly tranquil retreat with the sound of birdsong through French doors to the heated terrace, plus an en-suite with double rain shower. There are two further sizeable double bedrooms with en-suites and two further versatile double bedrooms serviced by a house bathroom. There is access to plentiful storage within the loft, and the heating can be controlled remotely with Nest.

Council tax band F EPC rating C (74)

Features

- Five double bedrooms
- Four bathrooms plus downstairs WC
- Private garden & bedroom terrace
- Gated private development overlooking Brockwell Park
- Two off-street parking spaces
- Immaculately presented freehold house
- Local amenities and eateries
- Herne Hill a ten-minute stroll across the park
- Brixton a fifteen-minute walk away
- Excellent transport links





Brockwell Park Row, Brixton, SW2

Brockwell Park Row, SW2
5 Bedroom House

APPROXIMATE GROSS INTERNAL AREA:
TOTAL AREA (INCLUDING OUTBUILDING):

1611 SQ FT / 149.7 SQ M
1653 SQ FT / 153.6 SQ M



While we try our very best, floor plans are produced as a guide only and we take no responsibility for the precise accuracy with which any property is represented.

Brockwell Park Row, Brixton, SW2

