



Loughborough Road, Brixton, SW9

2 bedroom maisonette for sale

£635,000

Leasehold

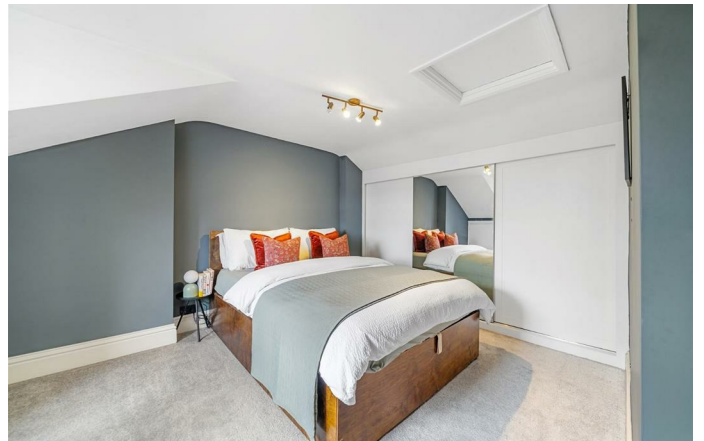
## Property Details

An exceptional split-level two bedroom Victorian maisonette occupying a grand Grade II listed semi-detached house, set back from Loughborough Road. Split over the upper the floors, the apartment benefits from additional privacy and light and feels like a home, as soon as you walk through the private front door, into the impressive entrance hall with meandering staircase. Characterful features are a running theme throughout, with high ceilings, exposed wooden flooring, and pretty sash windows. The sizeable reception is an inviting space in which to unwind and the high-spec fitted kitchen is complete with brand new appliances, creating a fantastic space in which to cook, host and dine. Both bedrooms are doubles, set peacefully on the upper floor with cosy carpets. The principal bedroom is particularly large with built-in wardrobes. In keeping with the rest of this beautiful home, the bathroom is generous and smartly presented, equipped with a bathtub plus overhead shower. There is copious amounts of storage with a huge space behind the wardrobe in the principal bedroom but also within the eaves, attic, built-in cupboards and the entrance hall.

## Features

- Two double bedrooms
- Semi-detached Victorian maisonette
- Grade II listed
- Own front door
- Characterful features
- Copious storage
- Split over two floors
- Over 1,000 square feet
- Sought-after area close to Brixton
- Walking distance to Victoria and Northern lines

Council tax band D    EPC rating D (67)





Loughborough Road, Brixton, SW9

**Loughborough Road, SW9**  
**2 Bedroom Flat**

APPROXIMATE GROSS INTERNAL AREA (INCLUDING EAVES): 1097 SQ FT / 101.9 SQ M



While we try our very best, floor plans are produced as a guide only and we take no responsibility for the precise accuracy with which any property is represented.

Loughborough Road, Brixton, SW9

