



**Strathleven Road, Brixton, SW2**

2 bedroom flat to let

**£508 Per Week**

Part furnished

## Property Details

A charming two double bedroom split level top flat sandwiched between both Clapham and Brixton. The flat comes complete with a well presented reception room which has two large bay windows flooding the room in natural light, a separate eat in kitchen which is fitted modern integrated appliances, two double bedrooms and a sleek modern family size bathroom. Strathleven Road is a residential, terraced street popular for its close proximity to both Brixton (ten minute walk) and Clapham (ten minute walk), the transport links are ideal, with Victoria nineteen minutes away, door-to-door and The City only twenty six minutes away. You will benefit from the amenities in both areas, a few examples include the green open spaces of Brockwell Park known for its popular 1930's lido, Clapham Common and all that Clapham, Abbeville Village, and Brixton Village have to offer in terms of food and festivities. This is a beautiful flat great in a great location.

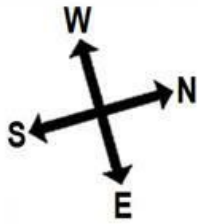
## Features

- Split-level
- Light and airy
- Victorian conversion
- 2 Double bedrooms
- Central Location
- Available from the 4th of June

Council tax band D    EPC rating D (61)

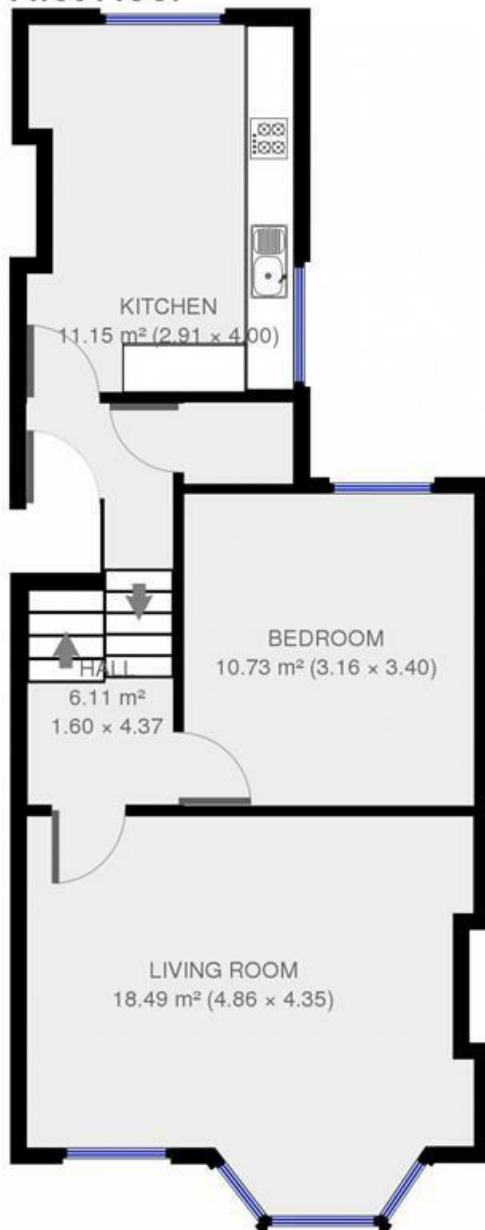


Strathleven Road, Brixton, SW2

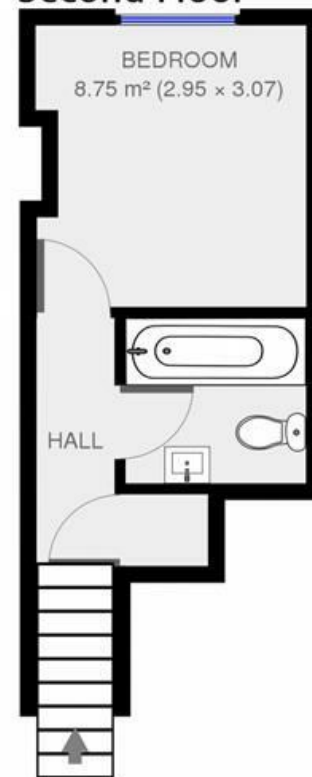


## Strathleven Road

### First Floor



### Second Floor



**2 bed flat.**

Approx internal area:

**700 sqft 65 sqm**

While we do try our very best, floor plans are produced as a guide only and we take no responsibility for the precise accuracy with which any property is represented

Strathleven Road, Brixton, SW2

