



Fairmount Road, Brixton, SW2

4 bedroom house - terraced to let

£1,038 Per Week

Furnished

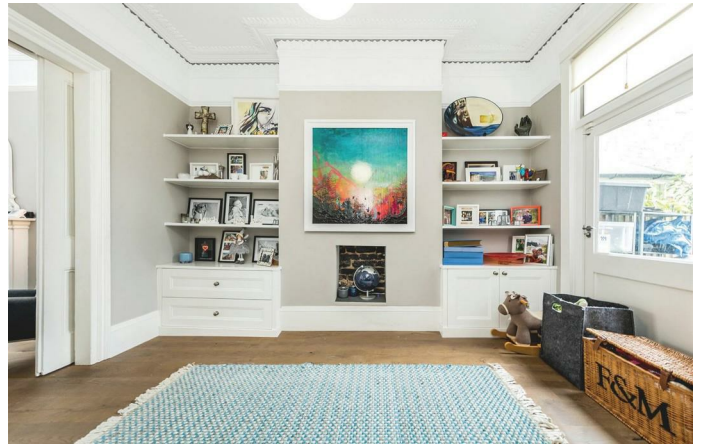
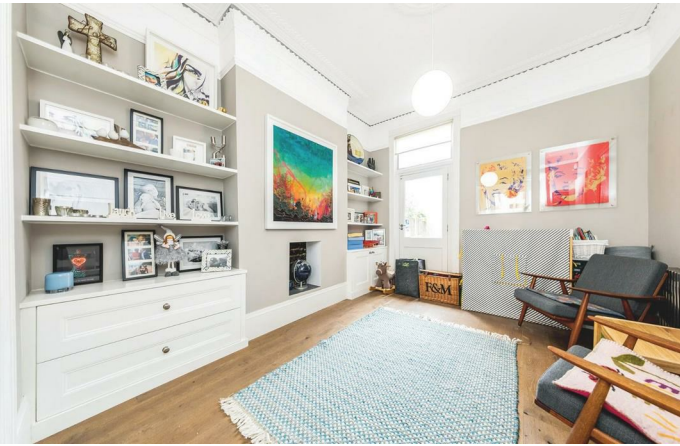
Property Details

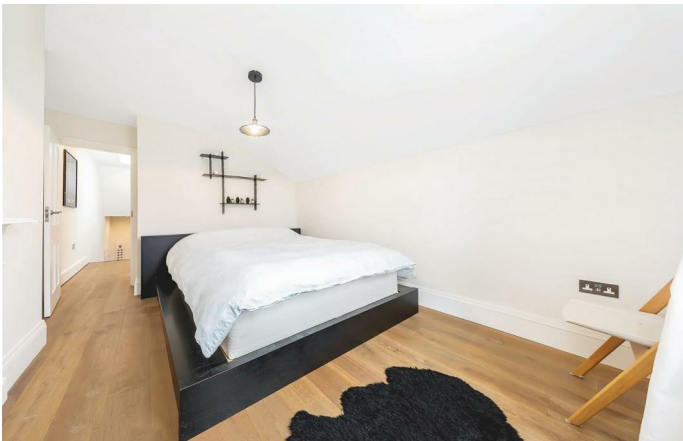
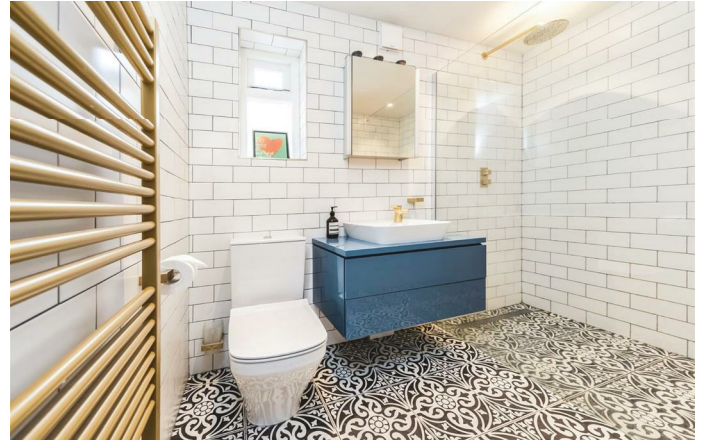
A handsome reception room occupies the front of the ground floor. The large bay window floods the room with natural light from one end whilst the other side provides garden access. Following on, a handy WC is nestled between the receptions and the impressive eat-in kitchen at the rear. Comfortable space to dine in a more informal setting, the kitchen extension opens directly out onto the patio. The kitchen itself is modern and attractive, fully integrated high-quality appliances and an abundance of storage options. Adorned with a sleek gloss finish, the kitchen is complimented by a desirable wine fridge. The private garden is large and sun-filled, ideal for al-fresco dining with the kitchen extending outside with a built-in BBQ. Arranged over the first and second floors of this characterful house, four very well-proportioned double bedrooms, a loft room and two particularly attractive family bathrooms. The Principal bedroom on the first floor spans the width of the house and benefits from the charming bay window and built-in storage. Both bathrooms have been recently decorated and come completed with trendy tiling and appealing gold finishes.

Council tax band F EPC rating D (57)

Features

- Four double bedrooms plus loft room
- Two bathrooms & a WC
- Large & sunny private garden
- Victorian terraced house
- Over 2,000 square feet of internal space
- Bright and characterful throughout
- Local amenities of Brixton Hill
- Minutes from central Brixton
- Excellent transport links including the Victoria Line
- Available ASAP

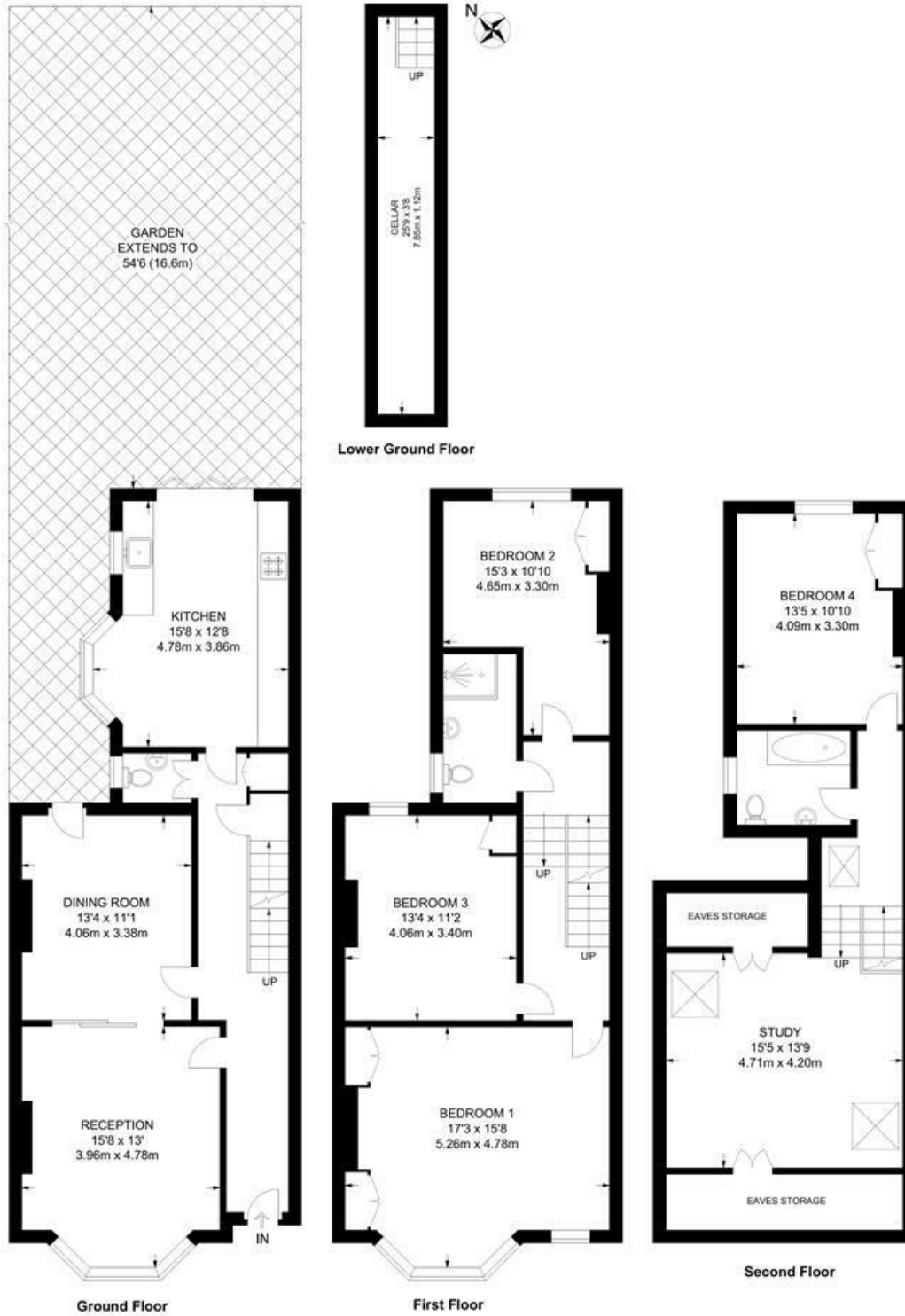




Fairmount Road, Brixton, SW2

Fairmount Road, SW2
4 Bedroom House

APPROXIMATE GROSS INTERNAL AREA WITH CELLAR: **2009 SQ FT / 186.6 SQ M**
APPROXIMATE GROSS INTERNAL AREA WITHOUT CELLAR: **1915 SQ FT / 177.9 SQ M**



While we try our very best, floor plans are produced as a guide only and we take no responsibility for the precise accuracy with which any property is represented.

Fairmount Road, Brixton, SW2

