

## Brixton Hill, Brixton, SW2

2 bedroom flat - purpose built for sale

£649,950

Leasehold

### Property Details

A phenomenal two double bedroom, two bathroom spacious apartment on the 12th floor of a luxury secure development with breath-taking panoramic views of the London skyline and over 800 square feet of internal living space. The property is situated in the heart of Brixton, moments from Brixton Village and the tube station. The popular green open spaces of Brockwell Park and the amenities on Clapham High Street are all within walking distance, covering the wants and needs of the majority of potential purchasers. The stunning 270-degree views across London from Wembley Stadium, Battersea PowerStation, Westminster, City of London, Canary Wharf, and back towards Crystal Palace, allow this apartment to stand out from the competition. Other selling points include underfloor heating throughout, Quartz composite worktops, built-in Bosch appliances, timber oak flooring, and recessed downlighting. The building benefits from lift access, a 10-year building warranty, handy secure bike storage, and a large shared communal roof terrace with equally impressive views.

### Features

- Two double bedrooms
- Two bathrooms
- Nestled away quietly on the 8th floor
- Nearly 800 square feet of internal living space
- Underfloor heating throughout
- Private roof terrace with 270-degree panoramic views
- Large communal terrace and secure bike storage
- Central Brixton, moments from Brixton tube station and Brixton Village
- A short stroll to Brockwell Park
- Chain-free

Council tax band D    EPC rating (null)

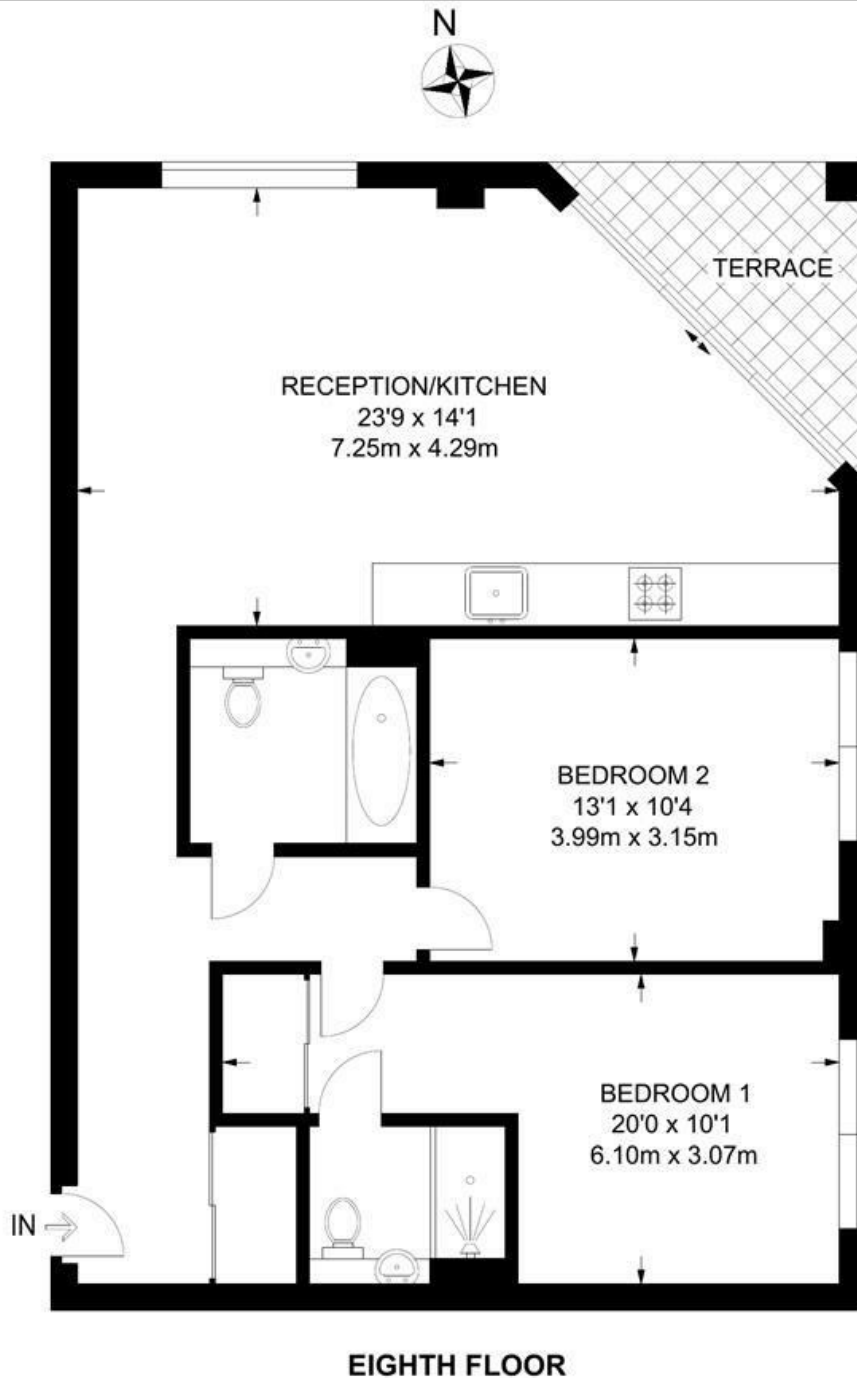




Brixton Hill, Brixton, SW2

**Somerset Place, SW2**  
**2 Bedroom Flat**

APPROXIMATE GROSS INTERNAL AREA: **780 SQ FT / 72.5 SQ M**



While we try our very best, floor plans are produced as a guide only and we take no responsibility for the precise accuracy with which any property is represented.

Brixton Hill, Brixton, SW2

