



**ABSOLUTE**  
PROPERTY

Sopers House, Soper Road, Cuffley EN6 4RY

☎ 020 8882 8156 ☎ 020 8882 8155

✉ info@absolutepropertyagents.com

🌐 www.absolutepropertyagents.com

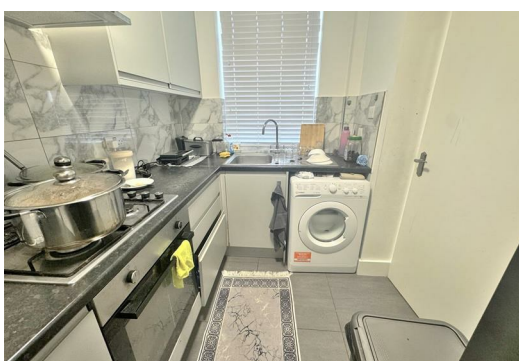


**42A Green Lanes, London  
N13 6JU**

**Price Guide £300,000**

Absolute property are delighted to offer this three bedroom first floor flat located just off Green Lanes close to local shops and Palmers Green Station. The property benefits from it's own balcony area, spacious lounge, separate kitchen, double glazing, gas central, three bedrooms split over two floors and comes with the added advantage of being offered on a Chain Free basis.

Viewing is highly recommended to avoid disappointment.





42A Green Lanes, London  
N13 6JU

Entrance Hall

Leading to Kitchen, lounge and stairs to first flooring

Kitchen

6'9" x 8'9" (2.072m x 2.675m)  
Range of eye and base level units, tiled flooring, built in oven and gas hob with extractor fan, sink unit with mixer taps

Lounge

9'9" x 13'9" (2.988 x 4.198m)  
Wood laminate flooring, double glazed window to side, radiator, door leading to private balcony.

Bedroom One

12'7" x 13'6" (3.854 x 4.123)  
Carpet throughout, 2 x double glazed windows, radiator

Bedroom Two

9'2" x 13'9" (2.815 x 4.209)  
Carpet throughout, radiator, double glazed window to side

Bedroom Three

6'9" x 10'4" (2.076 x 3.164)  
Carpet throughout, double glazed window to side, radiator and built in wardrobe

Bathroom

6'0" x 8'4" (1.838 x 2.561 )  
Tiled throughout, low flush WC, mixer tap, bath with shower attachment, double glazed window to side, heated towel rail.

