



ABSOLUTE
PROPERTY

104 Lonsdale Drive
Enfield, Middlesex EN2 7NA

£785,000



THREE DOUBLE BEDROOMS - semi-detached family home with integral garage. Upon arrival, you are met with ample parking in the form of a large driveway, which is comfortably able to accommodate a number of vehicles. Once inside, there is a welcoming hallway, with access to a through lounge/diner a downstairs w/c and a kitchen/diner. The first floor hosts three double bedrooms and family bathroom. Externally, in addition to the large driveway, the property has a lovely family-friendly garden, which is fully enclosed and has a patio area, and a large lawn area. Viewing is Highly recommended to avoid disappointment.

Lonsdale Drive sits in an outstanding residential location. Oakwood London Underground Station (Piccadilly Line) is 0.5 miles away and some of the area's most sought after schools are also in the vicinity, including Eversley Primary School (Outstanding), Merryhills Primary School and Highlands Secondary School (Outstanding).



ENTRANCE:

Upvc double glazed front door opening to

HALLWAY:

Coving to ceiling, radiator, open doorway to through lounge, door to kitchen/diner, stairs to first floor landing, under stairs storage, door to guest cloakroom.

GUEST CLOAKROOM:

Comprising of low flush wc, hand wash basin, extractor fan

KITCHEN/DINER:

Range of eye and base level units, built in oven, hob and extractor, plumbing for dishwasher, stainless steel sink drainer unit with mixer taps, two upvc double glazed windows to rear aspect, upvc double glazed single door opening to rear garden

THROUGH LOUNGE:

Coving to ceiling, two radiators, upvc double glazed window to front aspect, upvc double glazed double doors opening to rear garden.

FIRST FLOOR LANDING:

Doors to bedroom one, bedroom two, bedroom three, bathroom, loft access, upvc double glazed frosted window to side aspect.

BEDROOM ONE:

Fitted wardrobes, radiator, coving to ceiling, upvc double glazed window to front aspect.

BEDROOM TWO:

Fitted wardrobes and dresser unit, coving to ceiling, radiator, upvc double glazed bay window to rear aspect.

BEDROOM THREE:

Two double glazed windows to front aspect, radiator

BATHROOM:

Four-piece suite comprising of low flush wc, pedestal hand wash basin with mixer taps, bath with shower attachment, shower cubicle, radiator, two upvc double glazed frosted window to side and rear aspect.

FRONT ASPECT:

Paved driveway leading to garage with up and over door, side gate access

REAR GARDEN:

Block paved patio with rest mainly laid to lawn with various shrub borders and flower beds, outside tap, outside lighting, side gate access, shed

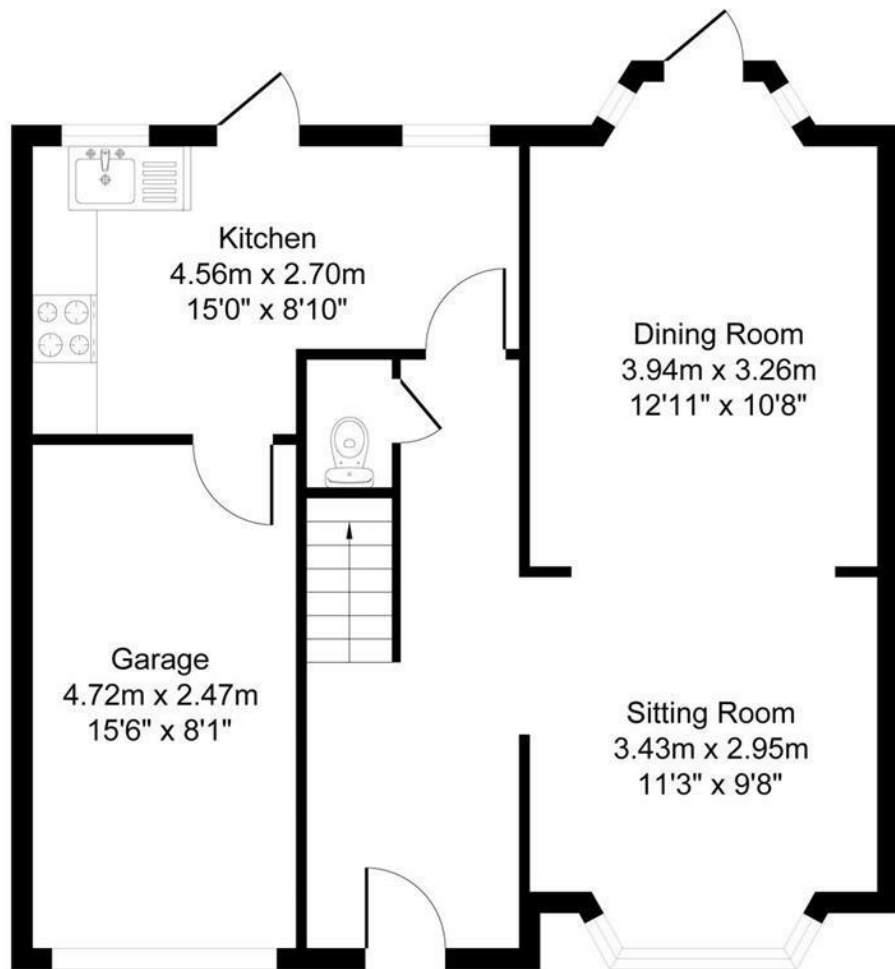
GARAGE:

Accessed via up and over door, electrics and lighting.

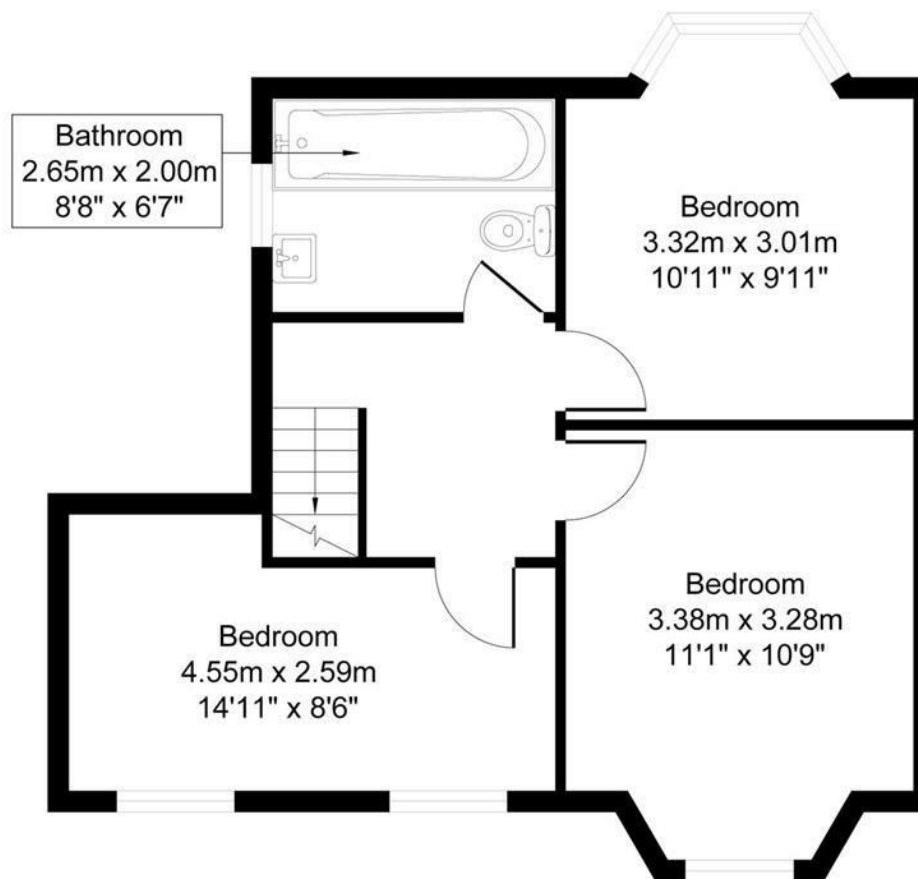




108 Lonsdale Drive EN2 7NA



Ground Floor



First Floor

Approximate Gross Internal Area = 105.62 sq m / 1136.88 sq ft
 Illustration for identification purposes only, measurements are approximate, not to scale

