



- A rarely available four bedroom semi detached house
- Two reception rooms
- Good Decorative order throughout with newly fitted kitchen
- Rear sunny garden
- Garage & No Onward Chain

Nevill Road, Hove, BN3 7BQ

Asking Price £650,000

A great opportunity to acquire this semi detached house occupying three floors situated in a popular location close to great local schools and Hove Park. The property is on good decorative order and benefits from having a sunny rear garden and a garage. The property is being sold with no onward chain!





## Property Description

Situated on the highly sought-after Nevill Road in Hove, this rarely available four-bedroom semi-detached house presents an exciting opportunity to create your dream family home. The property has been recently refurbished throughout but still leaves scope for your own touches and boasts and benefits from a new fitted kitchen.

The ground floor boasts two generously sized reception rooms, providing flexible living and entertaining spaces. Both rooms are filled with natural light, creating a warm and inviting atmosphere. The layout offers scope for reconfiguration or open-plan living, should you wish to enhance the sense of space.

To the rear, the sunny garden offers a private and peaceful outdoor retreat, perfect for family gatherings, gardening, or simply unwinding. With its favourable orientation, the garden enjoys plenty of sunlight throughout the day.

Upstairs, four well-proportioned bedrooms provide ample accommodation, making the property ideal for growing families. The home's traditional layout and character features give it a charming feel, while the need for some updating offers the chance to add value and personalise it to your taste.

Ideally located, the property is within close proximity to Hove Station, making it perfect for commuters. The area is renowned for its excellent local schools, green spaces, and easy access to Hove Park, as well as a range of shops, cafes, and amenities.

With its desirable location, spacious layout, and significant potential, this property represents a fantastic opportunity for those looking to create a stylish and comfortable family home in one of Hove's most popular residential areas.





## Accommodation

### GROUND FLOOR

SITTING ROOM  
16' 3" x 12' 10" (4.95m x 3.91m)

DINING ROOM  
16' 9" x 12' 10" (5.11m x 3.91m)

KITCHEN  
12' 1" x 8' 3" (3.68m x 2.51m)

WC

### FIRST FLOOR

BEDROOM  
16' 3" x 12' 10" (4.95m x 3.91m)

BEDROOM  
13' 11" x 12' 0" (4.24m x 3.66m)

BEDROOM  
10' 10" x 8' 3" (3.3m x 2.51m)

### SECOND FLOOR

BEDROOM  
24' 0" x 12' 2" (7.32m x 3.71m)

ENSUITE SHOWERROOM

### OUTSIDE

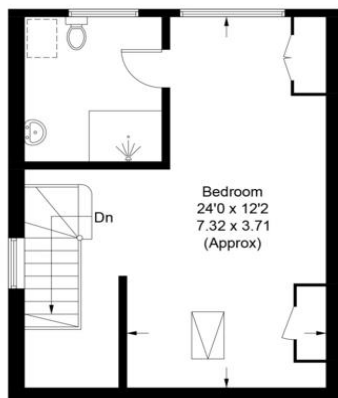
REAR GARDEN

GARAGE  
18' 8" x 15' 1" (5.69m x 4.6m) (to the rear of the property)



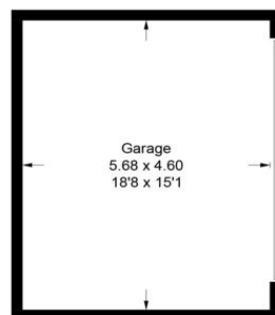
# Neville Road, Hove, BN3 3LJ

Approximate Gross Internal Area = 150.7 sq m / 1622 sq ft  
Garage = 26.2 sq m / 282 sq ft  
Total = 176.9 sq m / 1904 sq ft

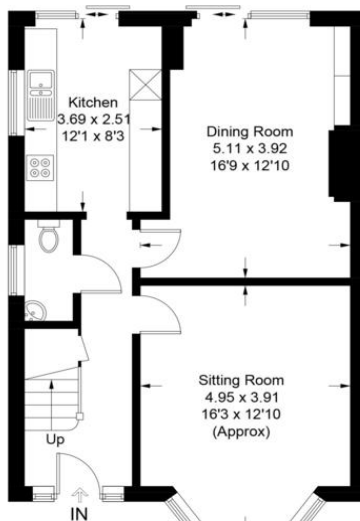


Second Floor

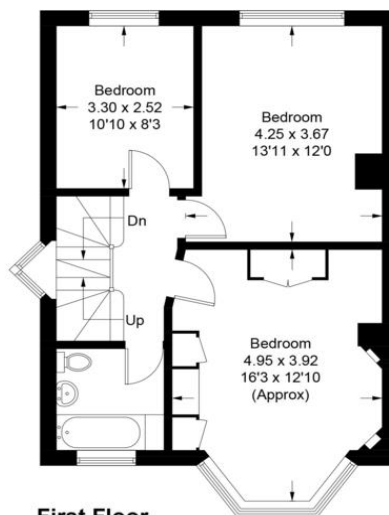
= Reduced headroom below 1.5m / 5'0



(Not Shown In Actual Location / Orientation)

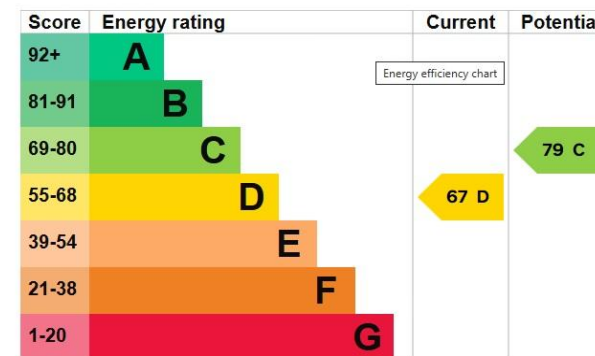


Ground Floor



First Floor

Illustration for identification purposes only, measurements are approximate, not to scale.  
Imageplansurveys @ 2025



Agents Note: Whilst every care has been taken to prepare these sales particulars, they are for guidance purposes only. All measurements are approximate and for general guidance purposes only and whilst every care has been taken to ensure their accuracy, they should not be relied upon and potential buyers are advised to recheck the measurements

112 Western Road  
Brighton  
East Sussex  
BN1 2AB

www.phillipsandstill.co.uk  
01273 771111  
westernrd@phillipsandstill.co.uk

Mon-Fri: 8.30am – 5.30pm  
Sat: : 9am - 5pm

