



Stamford Avenue, Hayling Island, PO11 0BN

£135,000

** TWO BEDROOM GROUND FLOOR APARTMENT**

GD3 Property welcome this two-bedroom ground floor apartment in the sought-after location of West Town – Hayling Island. Rapley Court is situated on the corner of Stamford Avenue and the Seafront road being within walking distance of the foreshore this property has communal gardens including a clothes drying area, residents parking bay (one for each apartment) and visitors parking.

There is a currently a tenant in situ paying £650 per month

Lease Hold information
Lease expires in 2137 (116 years)
Service charges £67 per month (£804)
Ground rent £8 per month (£96)

Stamford Avenue, Hayling Island, PO11 0BN

Entrance Porch



Bedroom 2



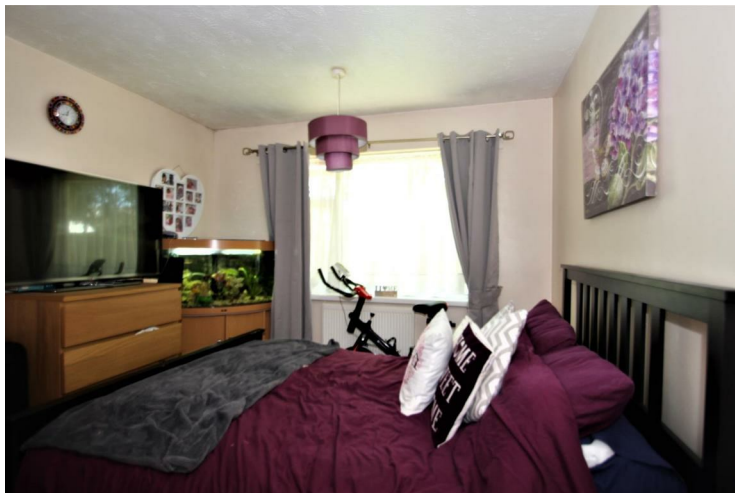
Lounge



Bathroom



Bedroom 1



Kitchen



