



Winchester Street, SW1V

£576 Per week

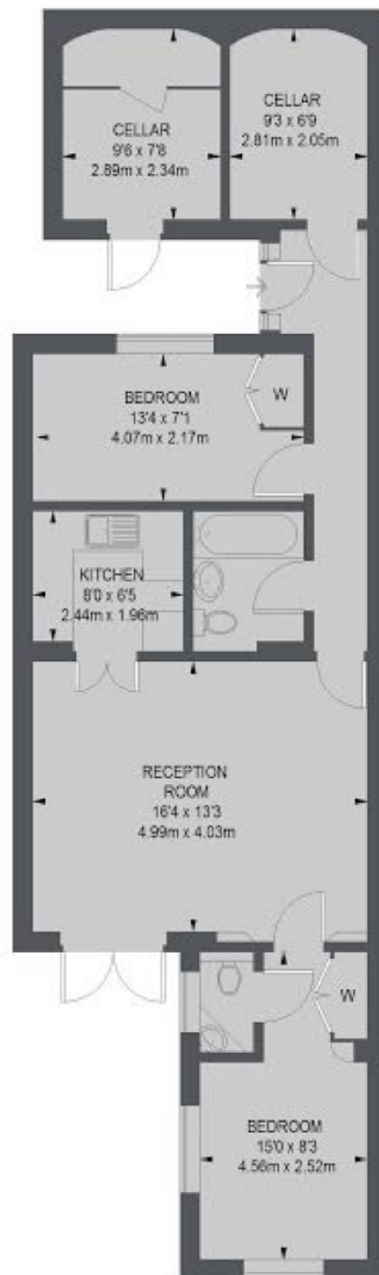
A lovely two double bedroom, two bathroom to rent in the centre of the Pimlico grid with a private patio garden. Suitable for either a small family or two professional sharers.

Living at this end of Winchester Street gets you close to Sloane Square, as well as Victoria. The shopping is almost endless on the Kings Road nearby.

Features

- Two Bedrooms
- Two Bathrooms
- Private Patio Garden
- Separate Kitchen
- Vault storage
- Pimlico Grid

Winchester Street,
London, SW1V



GROUND FLOOR

TOTAL APPROX. FLOOR AREA
629 SQ. FT. (58.39 SQ. M.)
CELLARS = 138 SQ. FT. (12.86 SQ. M.)

Dexters

Pimlico
42 Denbigh Street
London
SW1V 2ER
Lettings
020 7976 5200

Energy Rating: D. We aim to make our particulars both accurate and reliable. However they are not guaranteed; nor do they form part of an offer or contract. If you require clarification on any points then please contact us, especially if you're traveling some distance to view. Please note that appliances and heating systems have not been tested and therefore no warranties can be given as to their good working order.

 **RICS** | Regulated
Estate Agent
and Letting Agent

[dexters.co.uk](https://www.dexters.co.uk)