



Marsham Street, SW1P

£1,673 Per week

A superb three double bedroom, three bathroom apartment, finished in a contemporary high specification throughout and set within a modern development offering concierge services.

Drake House is situated at the cross roads of Horseferry Road and Marsham Street, giving it a great position in central London. There are lots of convenient shops around, including a selection of supermarkets and there are lots of local restaurants and pubs too for convenience.

Features

- Three Double Bedrooms
- Three Bathrooms
- Excellent Location
- 24 Hour Porter
- Excellent Condition
- Modern Finishings
- Parking included



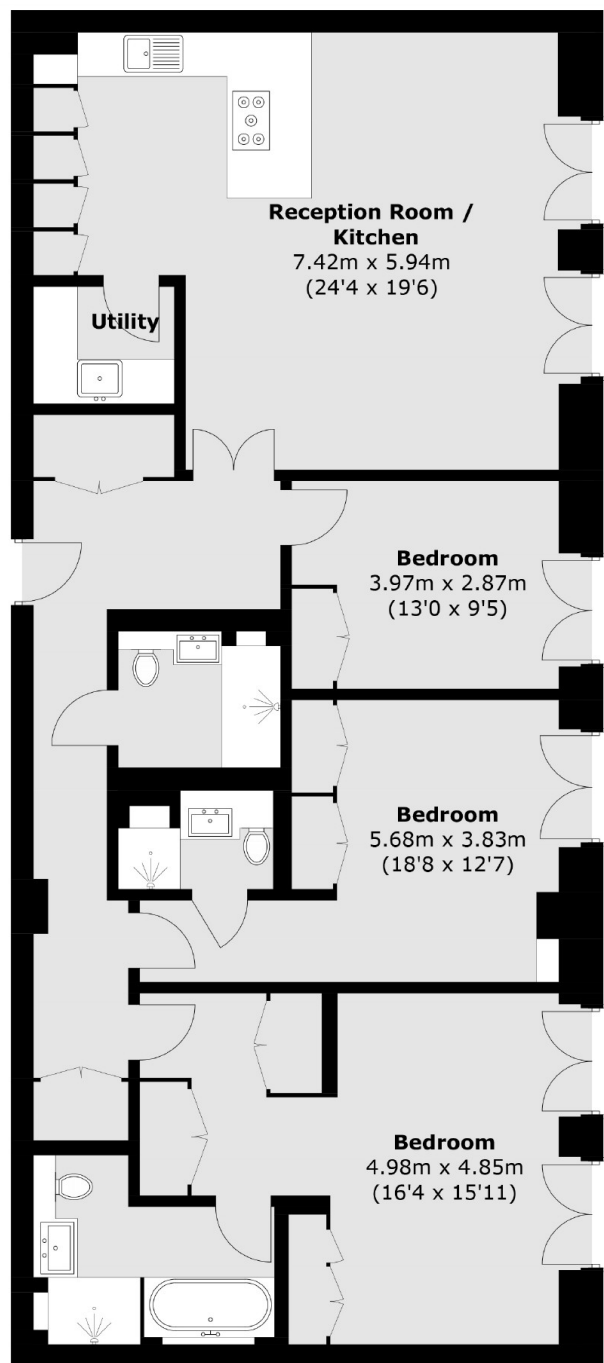
Marsham Street, SW1P

This newly refurbished apartment is accessed via a welcoming hallway with a useful storage area. The dual-aspect open-plan living space features hardwood flooring, a stylish modern kitchen, and ample room for dining and entertaining.

The principal bedroom suite includes built-in storage and a luxurious en suite with both a bath and separate shower. The second bedroom also benefits from its own en suite, while the third bedroom is served by a family-sized bathroom off the hallway. The property further benefits from secure parking.



Marsham Street,
London, SW1P



Fifth Floor

Total area (approx.): 132.9 sq. m (1,430.5 sq. ft)

Dexters

Pimlico
42 Denbigh Street
London
SW1V 2ER
Lettings
020 7976 5200

Energy Rating: B. We aim to make our particulars both accurate and reliable. However they are not guaranteed; nor do they form part of an offer or contract. If you require clarification on any points then please contact us, especially if you're traveling some distance to view. Please note that appliances and heating systems have not been tested and therefore no warranties can be given as to their good working order.

 **RICS** | Regulated
Estate Agent
and Letting Agent

[dexters.co.uk](https://www.dexters.co.uk)