



Marsham Street, SW1P

£1,730 Per week

A superb three double bedroom, three bathroom apartment finished to a high specification modern style, within a new development with concierge service.

Drake House is situated at the cross roads of Horseferry Road and Marsham Street, giving it a great position in central London. There are lots of convenient shops around, including a selection of supermarkets and there are lots of local restaurants and pubs too for convenience.

Features

- Three Double Bedrooms
- Three Bathrooms
- Excellent Location
- 24 Hour Porter
- Excellent Condition
- Modern Finishings
- Parking included



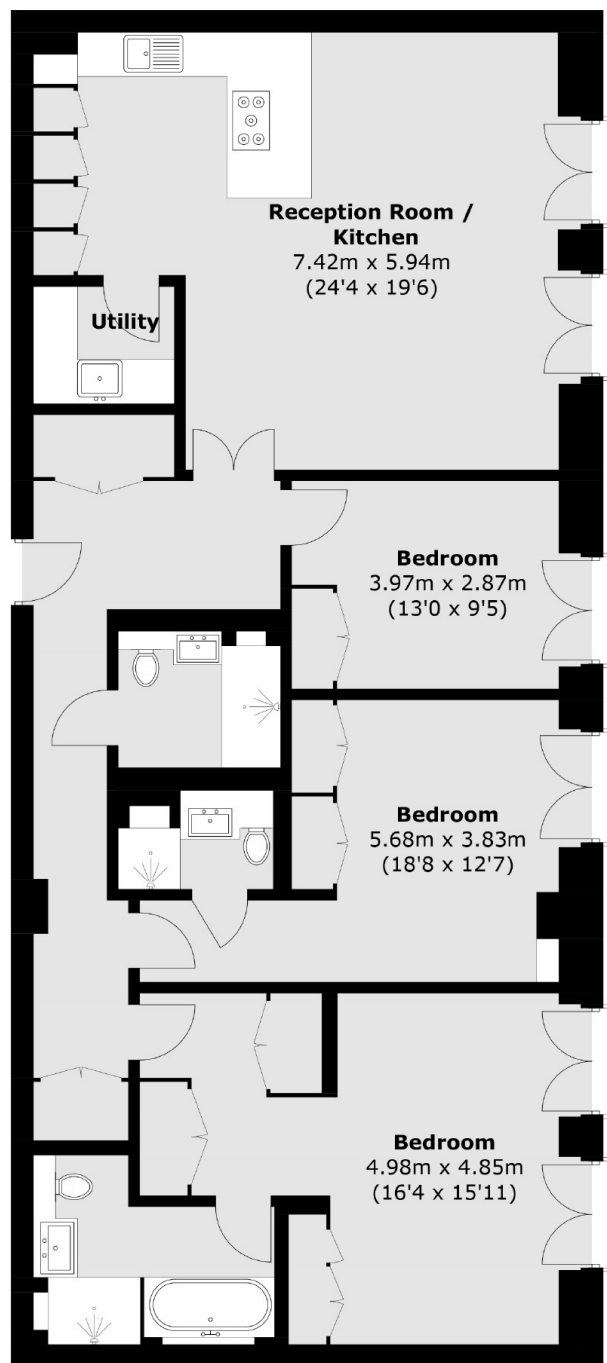
Marsham Street, SW1P

The newly refurbished apartment is entered through the hallway, which features a convenient storage area. The dual aspect, open plan living room has hard wood floors and a modern kitchen, with plenty of space for dining. The master bedroom suite has built in storage, and an en suite bathroom featuring a bath and separate shower enclosure.

Additionally, there is a second and third bedroom. The second bedroom has its own en suite bathroom, and there is a family size bathroom leading off the hallway. The property also comes with secure parking.



Marsham Street,
London, SW1P



Fifth Floor

Total area (approx.): 132.9 sq. m (1,430.5 sq. ft)

Dexters

Pimlico
42 Denbigh Street
London
SW1V 2ER
Lettings
020 7976 5200

Energy Rating: B. We aim to make our particulars both accurate and reliable. However they are not guaranteed; nor do they form part of an offer or contract. If you require clarification on any points then please contact us, especially if you're traveling some distance to view. Please note that appliances and heating systems have not been tested and therefore no warranties can be given as to their good working order.

 **RICS** | Regulated
Estate Agent
and Letting Agent

[dexters.co.uk](https://www.dexters.co.uk)