



## Hugh Street, SW1V

£550 Per week

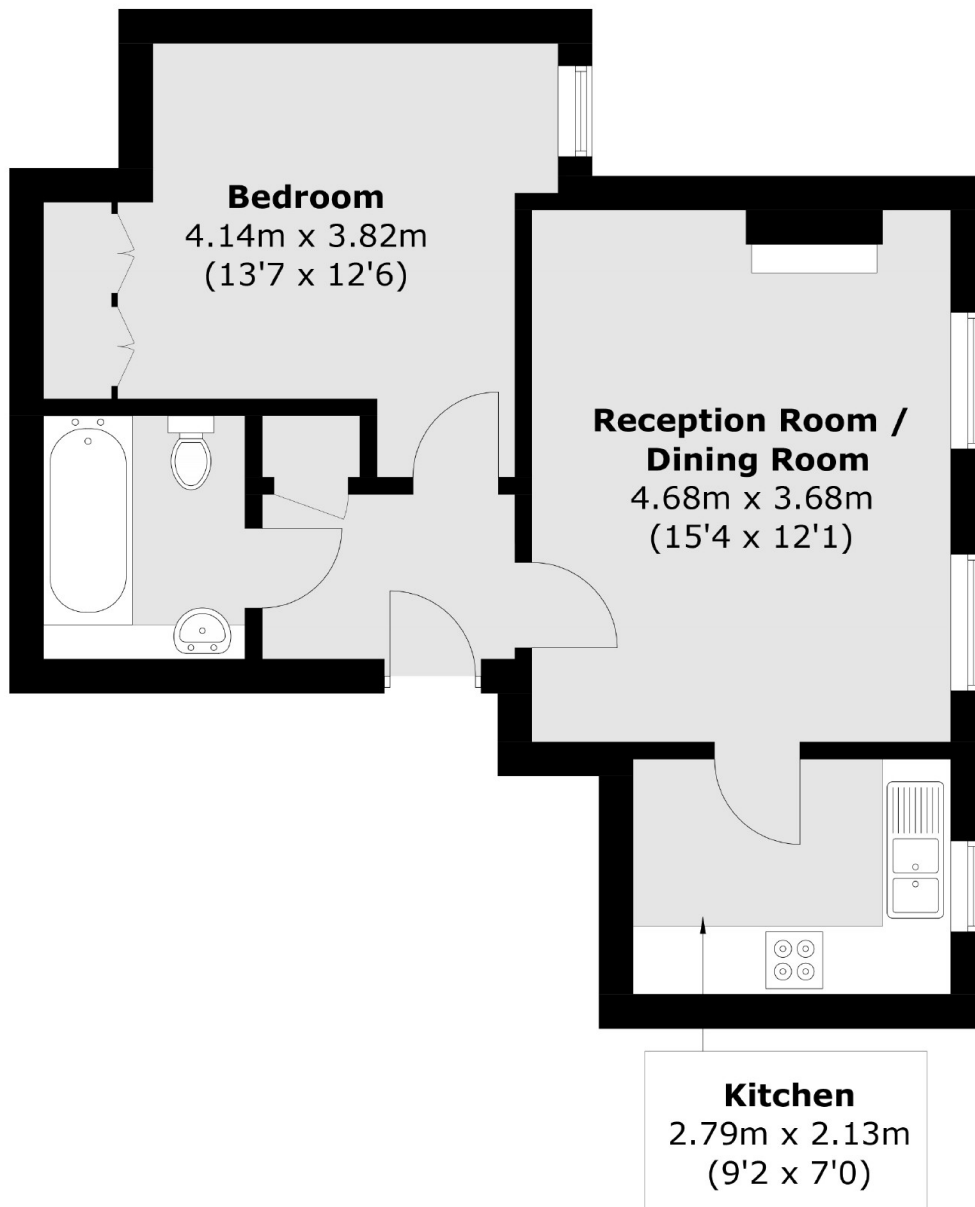
This stylish one bedroom apartment is located on the fourth floor (with lift) of a popular portered building with access to a communal roof terrace. The property comprises a bright reception room, separate kitchen, bathrooms and wooden floors.

Hugh Street is ideally located for some local delicatessens and pavement lined cafes along Warwick Way with Victoria and Victoria Street also easily accessible offering access to many fashionable shops, bars and restaurants.

### Features

- One Double Bedroom
- Reception Room
- Separate Kitchen
- Wooden Floors
- Day Portage
- Communal Roof Terrace

# Hugh Street, London, SW1V



Total area (approx.): 45.7 sq. m (491.9 sq. ft)