



Ashley Gardens, SW1P

£923 Per week

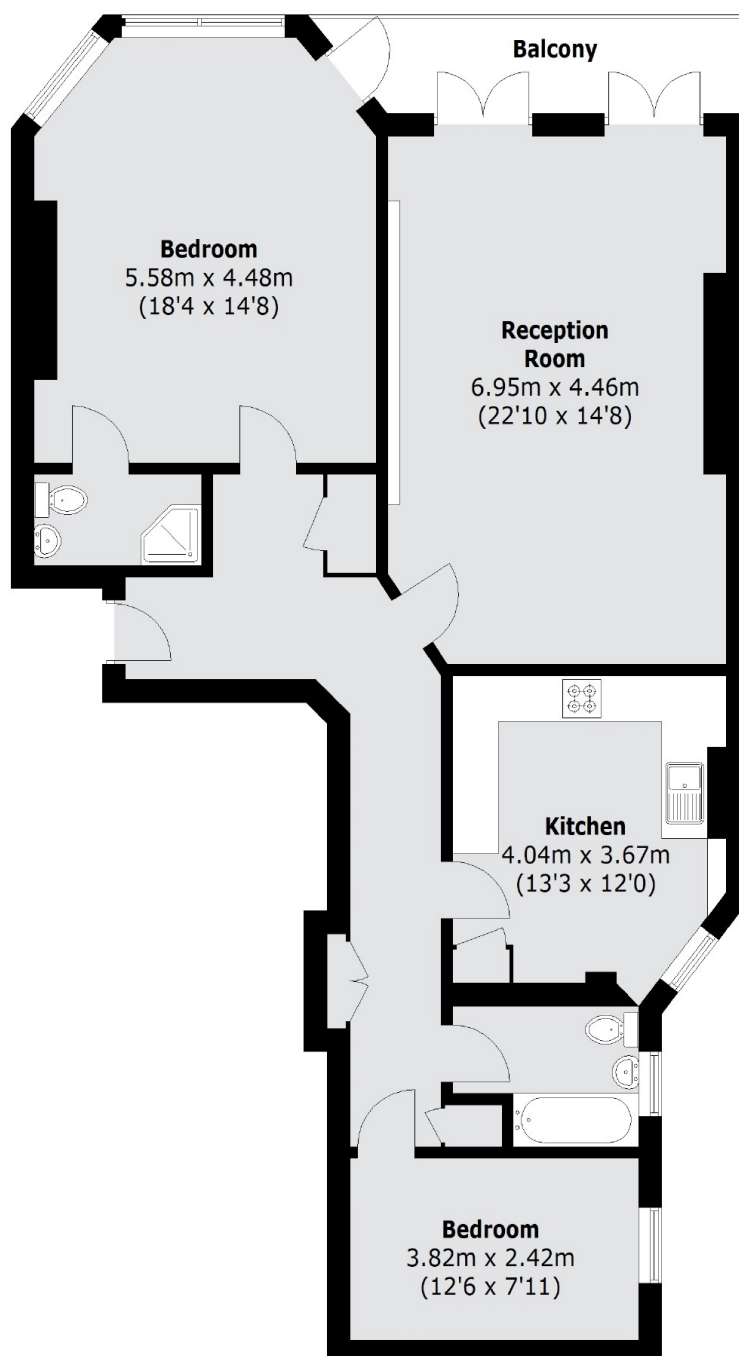
A spacious two double bedroom with traditional period features on the second floor of a purpose-built Victorian Mansion building in the heart of Westminster. This grand and impressive 1890's development is within the Westminster Cathedral Conservation Area.

Thirleby Road is located a few minutes from a variety of shops and fashionable restaurants on Victoria Street and there are excellent transport facilities at Victoria transport hub including the Gatwick Express.

Features

- Two Double Bedrooms
- Two Bathrooms
- Second Floor Apartment
- Lift Access
- 24 Hour Concierge
- Balcony

Ashley Gardens, London, SW1P



Total area (approx.): 106.0 sq. m (1141.0 Sq. ft)
Balcony: 6.9 sq. m (74.3 Sq. ft)

Dexters

Pimlico
42 Denbigh Street
London
SW1V 2ER
Lettings
020 7976 5200

Energy Rating: D. We aim to make our particulars both accurate and reliable. However they are not guaranteed; nor do they form part of an offer or contract. If you require clarification on any points then please contact us, especially if you're traveling some distance to view. Please note that appliances and heating systems have not been tested and therefore no warranties can be given as to their good working order.

 **RICS** | Regulated
Estate Agent
and Letting Agent

[dexters.co.uk](https://www.dexters.co.uk)