



Warwick Square, SW1V

£1,100 Per week

A recently refurbished two double bedroom apartment to rent on the raised ground floor in Warwick Square. Spacious reception room with high ceilings, large sash windows and period features, separate kitchen, two good size double bedrooms and two bathrooms. Residents have access to the private garden square and tennis courts upon subscription.

Warwick Square is in an unbeatable location, just south of Belgravia and Sloane Square.

Features

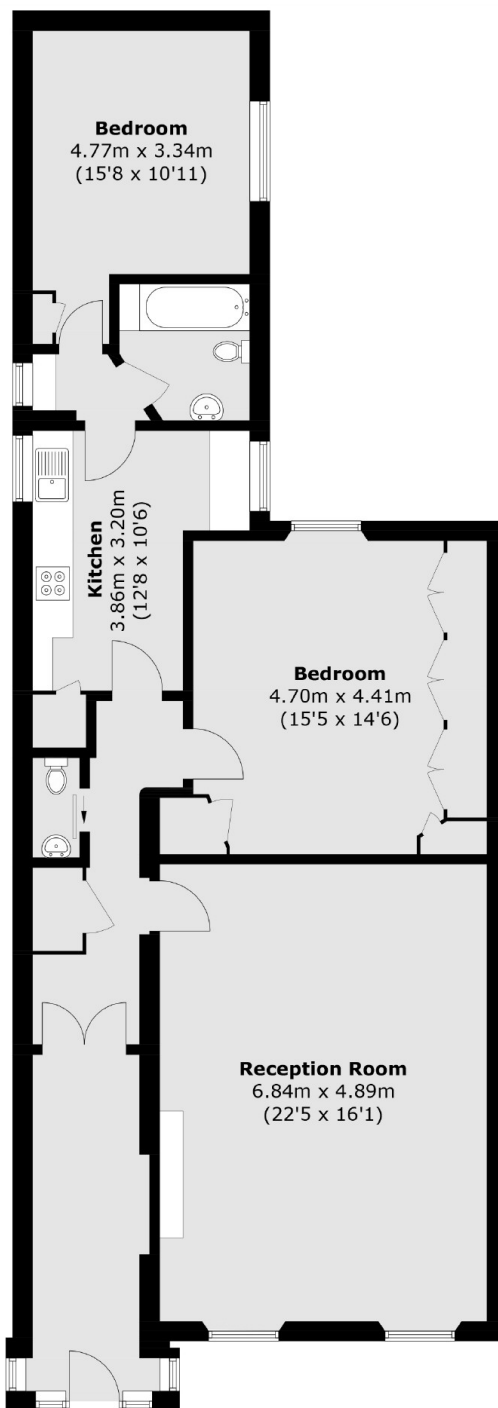
Recently Refurbished
Spacious Reception Room
High Ceilings Throughout
Own Private Entrance
Garden Square
Wood Floors Throughout



Warwick Square, SW1V



Warwick Square, London, SW1V



Total area (approx.): 107.1 sq. m (1,152.8sq. ft)

Dexters

Pimlico
42 Denbigh Street
London
SW1V 2ER
Lettings
020 7976 5200

Energy Rating: C. We aim to make our particulars both accurate and reliable. However they are not guaranteed; nor do they form part of an offer or contract. If you require clarification on any points then please contact us, especially if you're traveling some distance to view. Please note that appliances and heating systems have not been tested and therefore no warranties can be given as to their good working order.

 **RICS** | Regulated
Estate Agent
and Letting Agent

[dexters.co.uk](https://www.dexters.co.uk)