



Belgrave Road, SW1V

£692 Per week

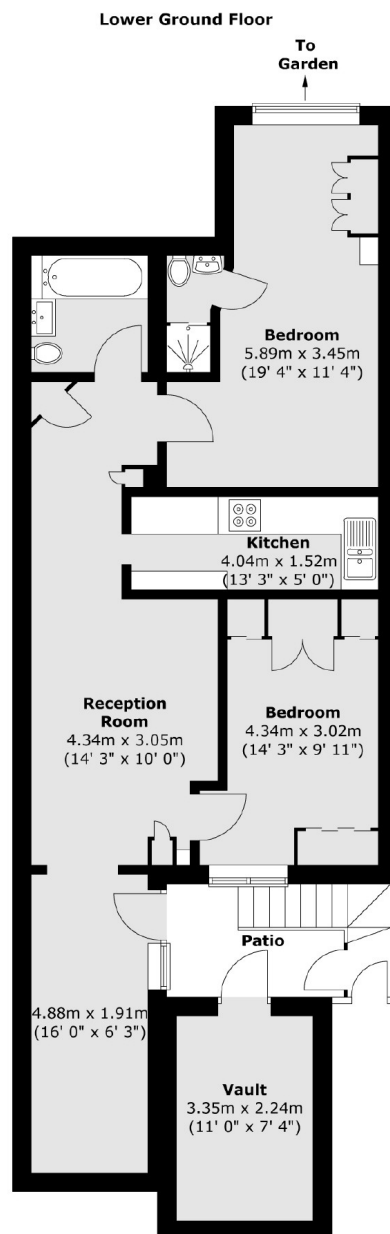
A well presented spacious two bedroom, two bathroom flat arranged over the lower ground floor of a Victorian building, with private outside space and dining area.

Located at the southern end of Belgrave Road, Pimlico tube station is only a minute or two away as well as the Thames. The delights of the Moreton Triangle are just around the corner.

Features

- Two Bedrooms
- Two Bathrooms
- Wood Floors
- Separate Kitchen
- Private Terrace
- Pimlico And Victoria

Belgrave Road,
London, SW1V



Total area (approx.) : 71.2 sq. m (766 sq. ft)
Total vault area (approx.) : 7.6 sq. m (82 sq. ft)
Total patio area (approx.) : 7.2 sq. m (77 sq. ft)

Dexters

Pimlico
42 Denbigh Street
London
SW1V 2ER
Lettings
020 7976 5200

Energy Rating: . We aim to make our particulars both accurate and reliable. However they are not guaranteed; nor do they form part of an offer or contract. If you require clarification on any points then please contact us, especially if you're traveling some distance to view. Please note that appliances and heating systems have not been tested and therefore no warranties can be given as to their good working order.

 **RICS** | Regulated
Estate Agent
and Letting Agent

dexters.co.uk