



Claverton Street, SW1V

£438 Per week

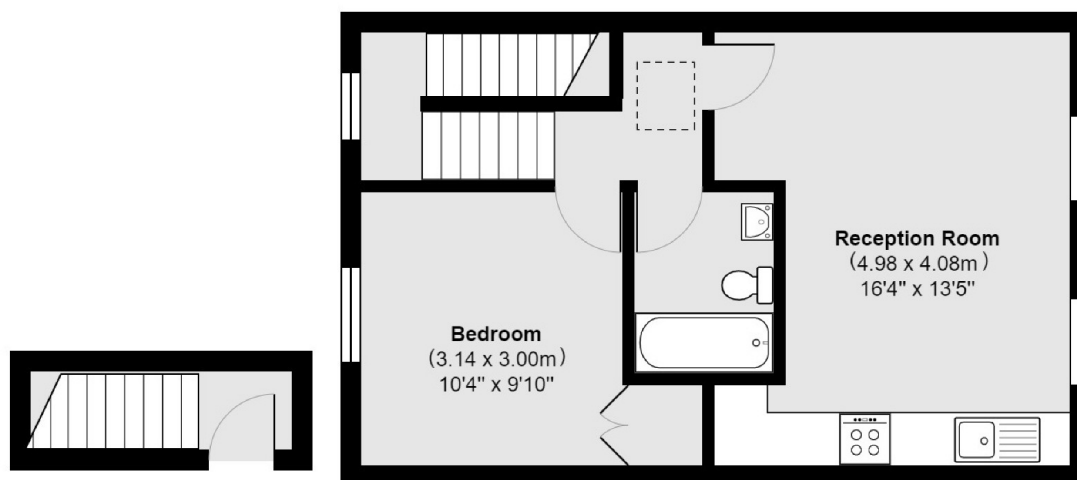
A recently refurbished one bedroom apartment on the top floor of a Victorian conversion in Pimlico. Bright reception room with modern open plan kitchen, good size double bedroom with storage and refurbished bathroom with shower over bath. Ideal home for a single professional or a couple.

Claverton Street is well located in Pimlico, close to the river and it's a short distance to the cafés, shops and restaurants of Warwick Way in the Grid including Café Nero, Tesco Local and the weekend farmers market at Tachbrook Triangle.

Features

- One Bedroom
- Top Floor
- Open Plan
- Furnished
- Bright
- Great Location

Claverton Street, London, SW1V



Total area 43.2 sq m (approx) (465 sq ft approx)