

## Churchill Gardens, SW1V

£600 Per week

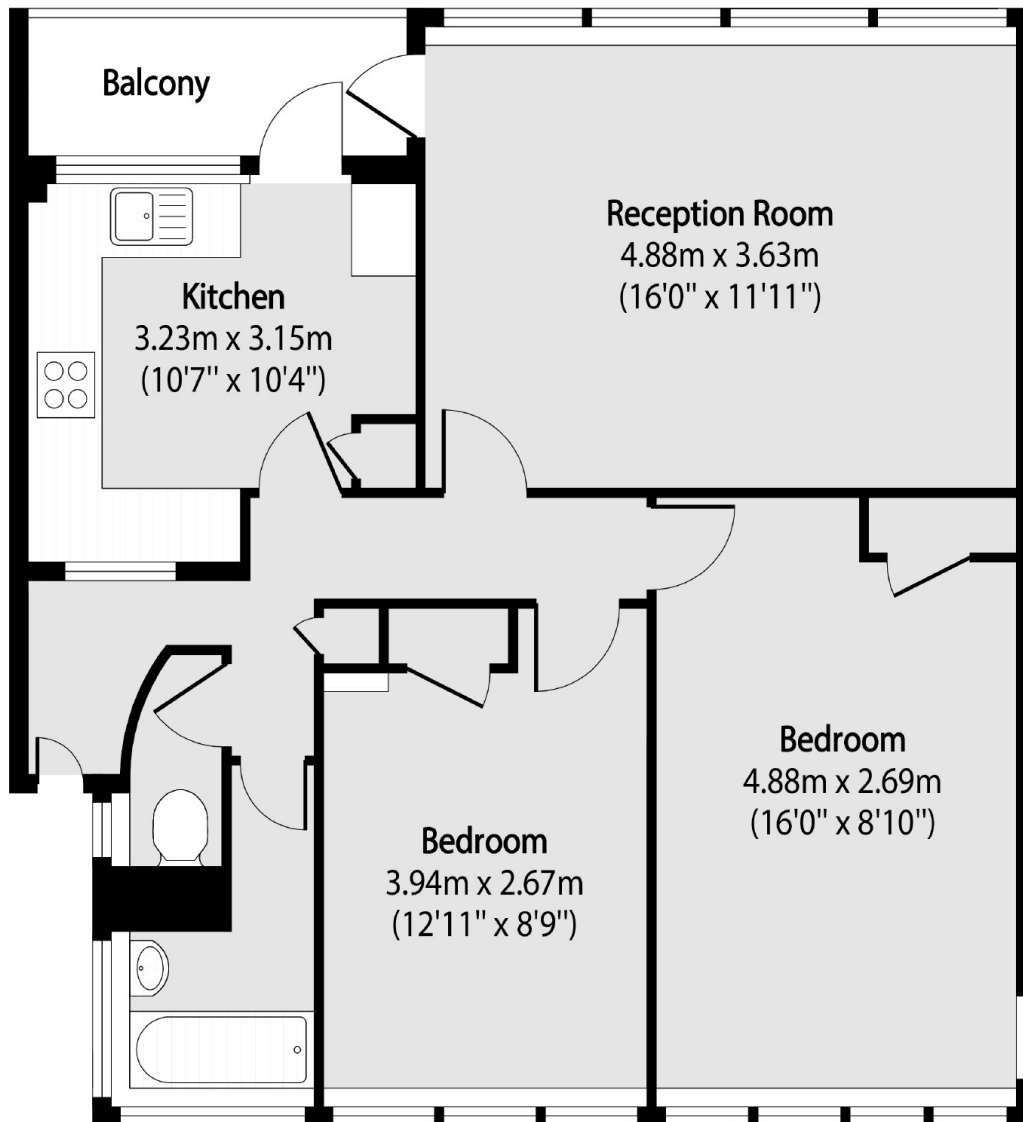
A large and well-presented apartment with two double bedrooms, bathroom with a separate WC, kitchen, reception room and a private balcony with views across London, River Thames and the famous Battersea Power Station. Heating and hot water included.

Anson House is ideally located close to the River Thames and is within walking distance of the amenities of Pimlico and Chelsea. Transport links are close by at either Pimlico or Victoria.

### Features

- Two Double Bedrooms
- Private Balcony
- Separate Kitchen
- Amazing Views
- 8th Floor Via Lift
- Wood Floors

Churchill Gardens,  
London, SW1V



Total area (approx): 66.70 sq m (718 sq. ft)

Balconytotal area (approx): 3.53 sq m (38 sq. ft)