



## Marsham Street, SW1P

£1,846 Per week

A superb three double bedroom, three bathroom apartment finished to a high specification modern style, within a newly built development with concierge service.

Drake House is situated at the cross roads of Horseferry Road and Marsham Street, giving it a great position in central London. There are lots of convenient shops around, including a selection of supermarkets and there are lots of local restaurants and pubs too for convenience.

### Features

- Three Double Bedrooms
- Three Bathrooms
- Excellent Location
- 24 Hour Porter
- Excellent Condition
- Modern Finishings
- Parking included



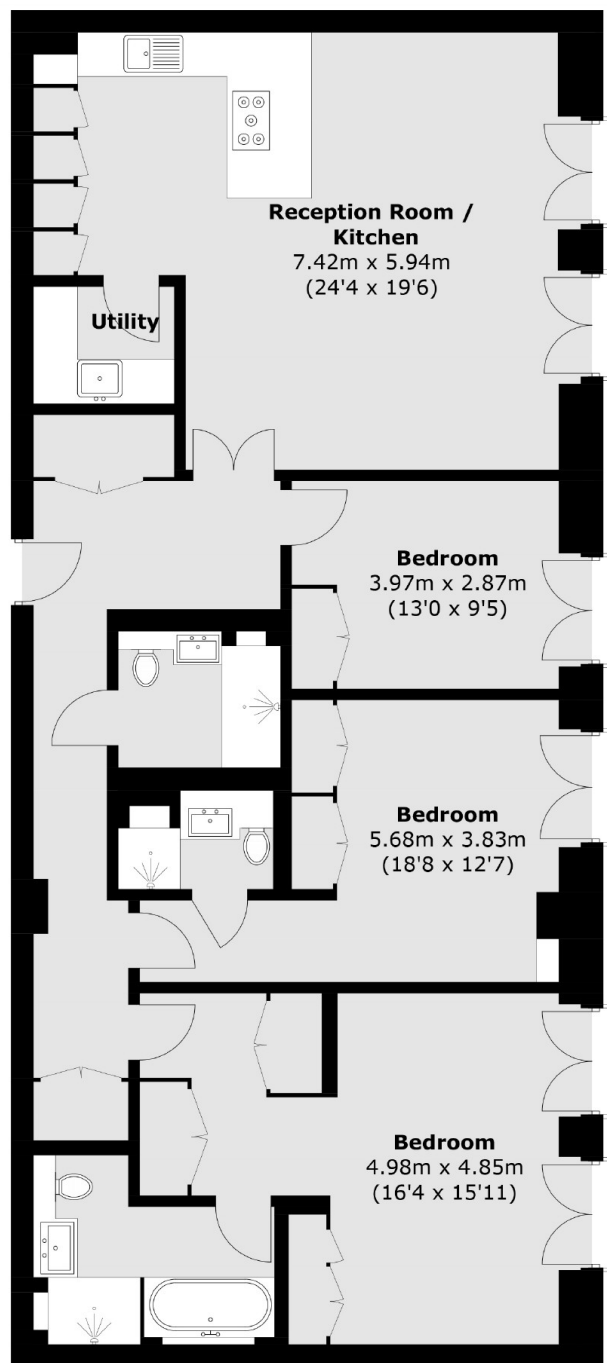
## Marsham Street, SW1P

The newly refurbished apartment is entered in to the hallway with storage. The dual aspect living room has hard wood floors and is open plan with the modern kitchen, there is plenty of space for dining. The master bedroom suite has built in storage, an en suite bathroom with a shower over the bath.

The second and third bedroom is of a similar size. There is a family size bathroom leading off the hallway with a shower over the bath. The property also comes with underground securing parking.



Marsham Street,  
London, SW1P



**Fifth Floor**

Total area (approx.): 132.9 sq. m (1,430.5 sq. ft)

**Dexters**

Pimlico  
42 Denbigh Street  
London  
SW1V 2ER  
Lettings  
020 7976 5200

Energy Rating: B. We aim to make our particulars both accurate and reliable. However they are not guaranteed; nor do they form part of an offer or contract. If you require clarification on any points then please contact us, especially if you're traveling some distance to view. Please note that appliances and heating systems have not been tested and therefore no warranties can be given as to their good working order.

 **RICS** | Regulated  
Estate Agent  
and Letting Agent

[dexters.co.uk](https://www.dexters.co.uk)