

Churchill Gardens, SW1V

£634 Per week

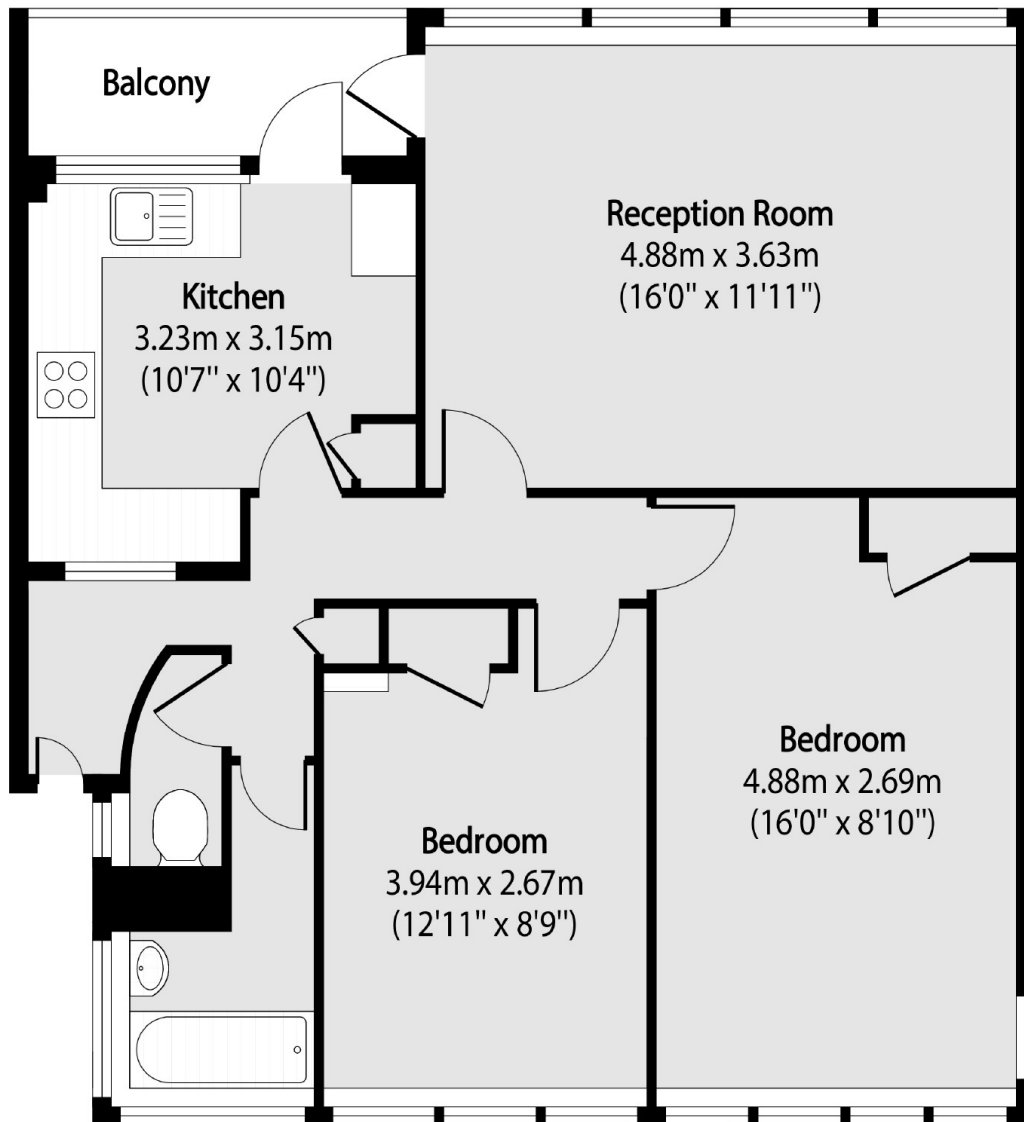
A large and well-presented apartment with two double bedrooms, bathroom with a separate WC, kitchen, reception room and a private balcony with views across London, River Thames and the famous Battersea Power Station. Heating and hot water included.

Anson House is ideally located close to the River Thames and is within walking distance of the amenities of Pimlico and Chelsea. Transport links are close by at either Pimlico or Victoria.

Features

- Two Double Bedrooms
- Private Balcony
- Separate Kitchen
- Amazing Views
- 8th Floor Via Lift
- Wood Floors

Churchill Gardens, London, SW1V



Total area (approx): 66.70 sq m (718 sq. ft)

Balconytotal area (approx): 3.53 sq m (38 sq. ft)

Dexters

Pimlico
42 Denbigh Street
London
SW1V 2ER
Lettings
020 7976 5200

Energy Rating: . We aim to make our particulars both accurate and reliable. However they are not guaranteed; nor do they form part of an offer or contract. If you require clarification on any points then please contact us, especially if you're traveling some distance to view. Please note that appliances and heating systems have not been tested and therefore no warranties can be given as to their good working order.

 **RICS** | Regulated
Estate Agent
and Letting Agent

dexters.co.uk