



## Belgrave Road, SW1V

### £600 Per week

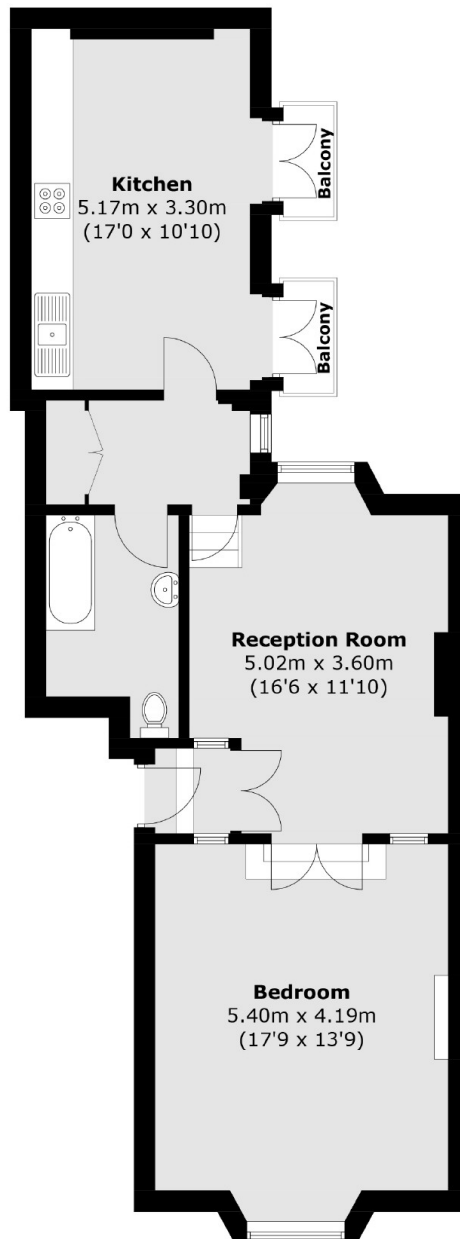
A raised ground floor flat with incredible period features including double height ceilings, cornices and chandeliers. There is a large eat in kitchen with range cooker to the rear of the flat.

This flat is in the middle of Belgrave Road, so you're surrounded by the boutique cafes and restaurants of the Popular Pimlico grid and supermarkets on Warwick Way.

### Features

- Ground Floor
- High Ceilings
- Large Eat In Kitchen
- Period Features
- Wood Floors
- One Bedroom

# Belgrave Road, London, SW1V



## Raise Ground Floor

Total area (approx.): 68.4 sq. m (736.2 sq. ft)  
Balcony : 2.3 sq. m (24.7 sq. ft)