



St. Georges Square, SW1V

£646 Per week

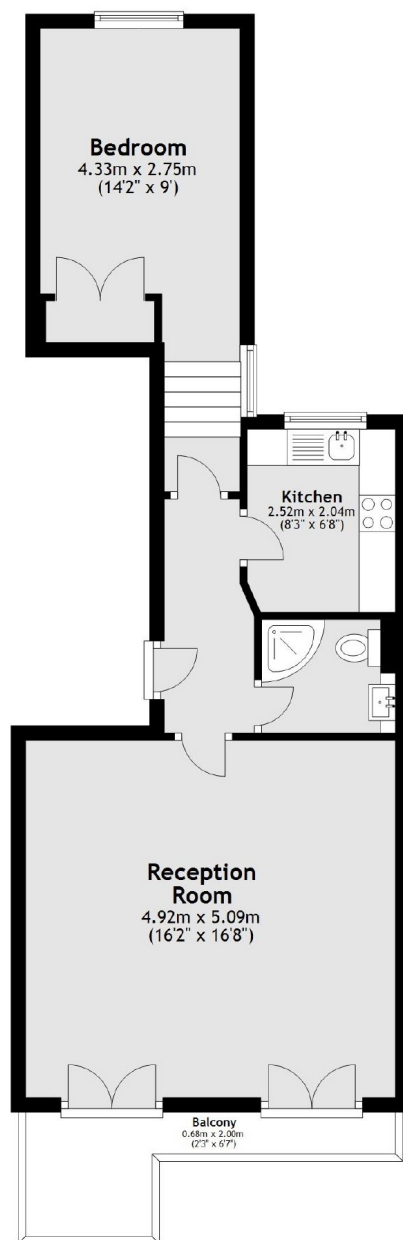
A stunning one double bedroom flat on the first floor of this smartly presented stucco fronted period building in the heart of Pimlico. The property has a spacious reception room with high ceilings access on a private balcony, a modern separate kitchen, shower room and a double bedroom located quietly at the back of the building.

Located at the northern end of the garden square, residents are very close Pimlico station as well as Victoria station making the journey to central London very quick. St. Georges square is surrounded by boutique shops and cafés.

Features

- One Double Bedroom
- First Floor Apartment
- Private Balcony
- Large Living Room
- Double High Ceiling's
- Excellent Location

St. Georges Square, London, SW1V



Main area: Approx. 51.8 sq. metres (557.4 sq. feet)
Plus balconies, approx. 5.4 sq. metres (58.3 sq. feet)

Dexters

Pimlico
42 Denbigh Street
London
SW1V 2ER
Lettings
020 7976 5200

Energy Rating: C. We aim to make our particulars both accurate and reliable. However they are not guaranteed; nor do they form part of an offer or contract. If you require clarification on any points then please contact us, especially if you're traveling some distance to view. Please note that appliances and heating systems have not been tested and therefore no warranties can be given as to their good working order.

 **RICS** | Regulated
Estate Agent
and Letting Agent

[dexters.co.uk](https://www.dexters.co.uk)