



Romney Street, SW1P

£1,825 Per week

This is one of three five-bedroom Georgian town houses that have been meticulously modernised maintaining their attractive period facade and with a beautifully presented contemporary interior.

Transport facilities are very good with Westminster and St. James's Park underground station a short distance away and easy access to Victoria and Waterloo stations.

Features

- Terraced House
- Five Bedrooms
- Georgian Facade
- Spacious and Modern Throughout
- Wood Floors
- Excellent Location



Romney Street, SW1P

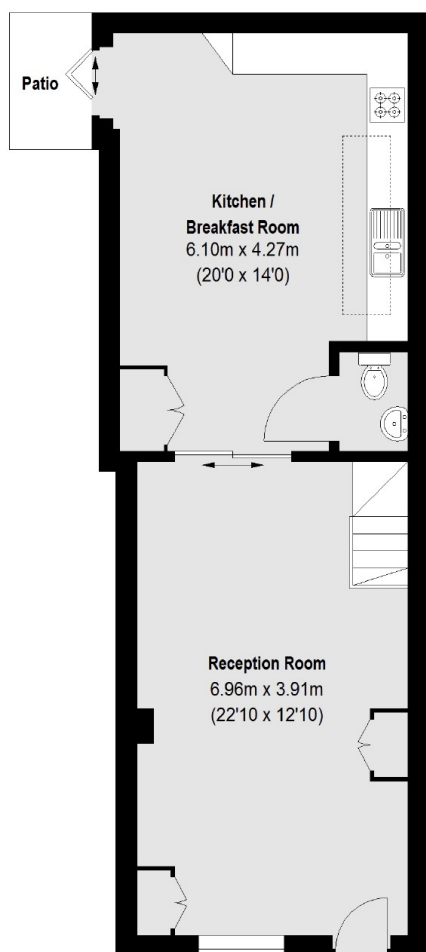
The accommodation is arranged with a spacious kitchen/dining room connecting to large reception room ideal for entertaining and a cloak room on the ground floor, the first floor comprises two bedrooms one with en suite bathroom, there is also a second bathroom and a terrace.

On the second floor there are two further bedrooms one with an en suite bathroom and a further bathroom and there is a small balcony, on the third floor there is bedroom suite with dressing room area and bathroom.

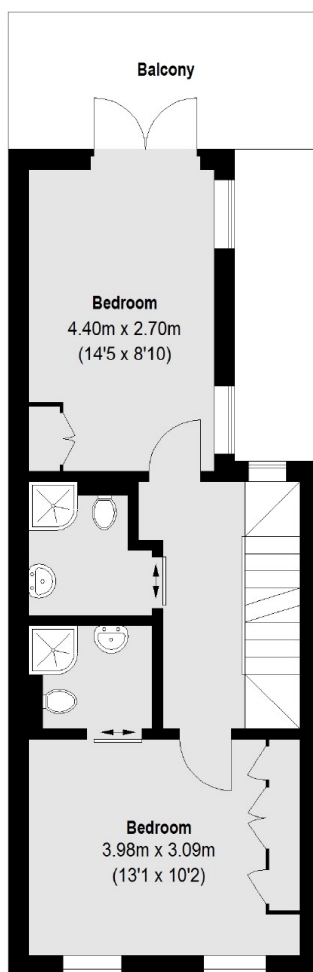
Romney Street is a discreet location in the heart of old Westminster, tucked away behind St Johns Church Smith Square and close to Parliament Square, Westminster Abbey St. James's Park and Victoria Gardens.



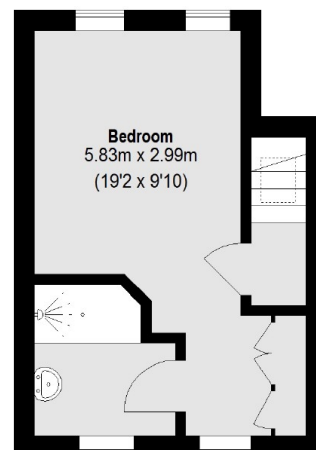
Romney Street, London, SW1P



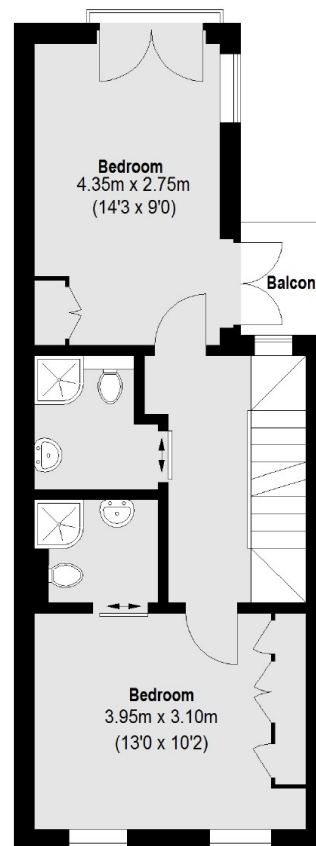
Ground Floor



First Floor



Third Floor



Second Floor

Total area (approx.): 155.8 sq. m (1677 Sq. ft)
Balconies: 11.16 sq. m (120 Sq. ft)