



## Marsham Street, SW1P

£1,100 Per week

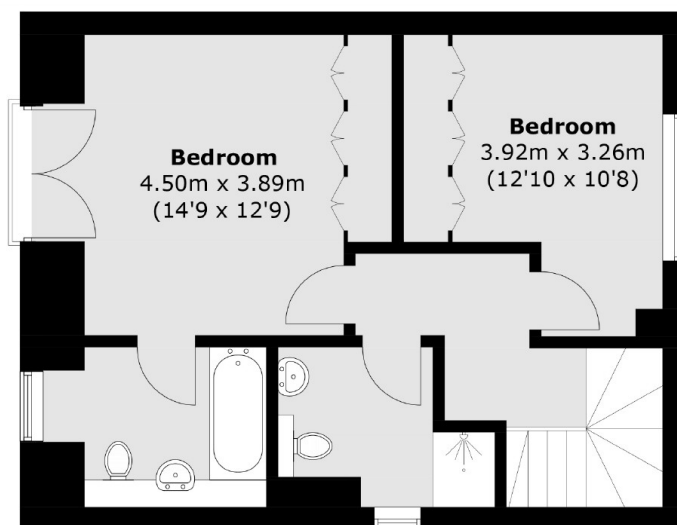
A newly refurbished two bedroom, two bathroom apartment in Westminster. There is a bright and spacious reception room with wood floors, modern open plan kitchen with separate dining area and guest WC. On the above apartment there is the principle bedroom with built in wardrobe and en suite bathroom, a second double bedroom with built in storage and family bathroom.

Altayyar House is located in the heart of Westminster. Westminster underground station (Victoria Line, Circle Line & Jubilee Line), Victoria Station is also within close proximity (Victoria Line, National Rail & Gatwick Express). There is also a wide range of boutique shops, restaurants, cafés close by.

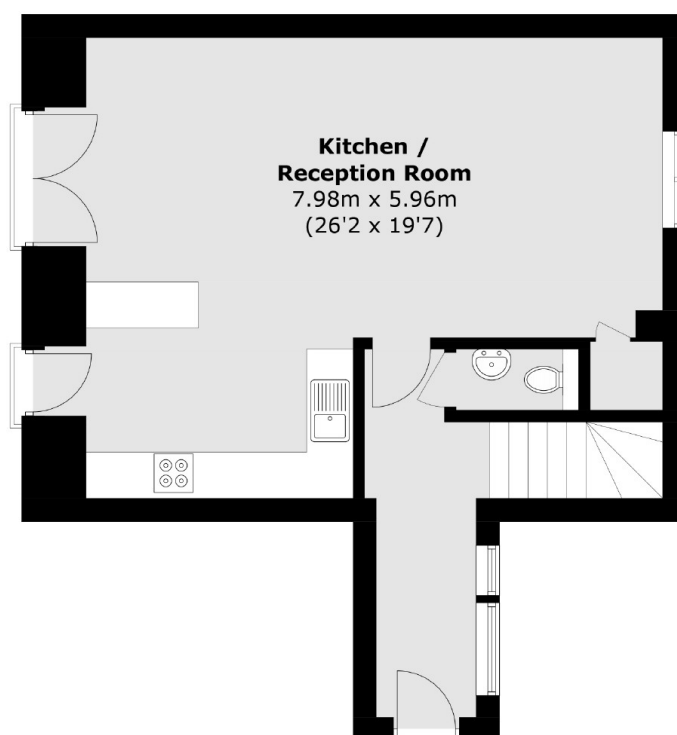
### Features

- Newly Refurbished
- Two Double Bedrooms
- Two Bathrooms
- Split Level Apartment
- Wood Floors In Reception Room
- Excellent Location

# Marsham Street, London, SW1P



**First Floor**



**Ground Floor**

Total area (approx.): 100.8 sq. m (1,085.0 sq. ft)