



## Marsham Street, SW1P

£550 Per week

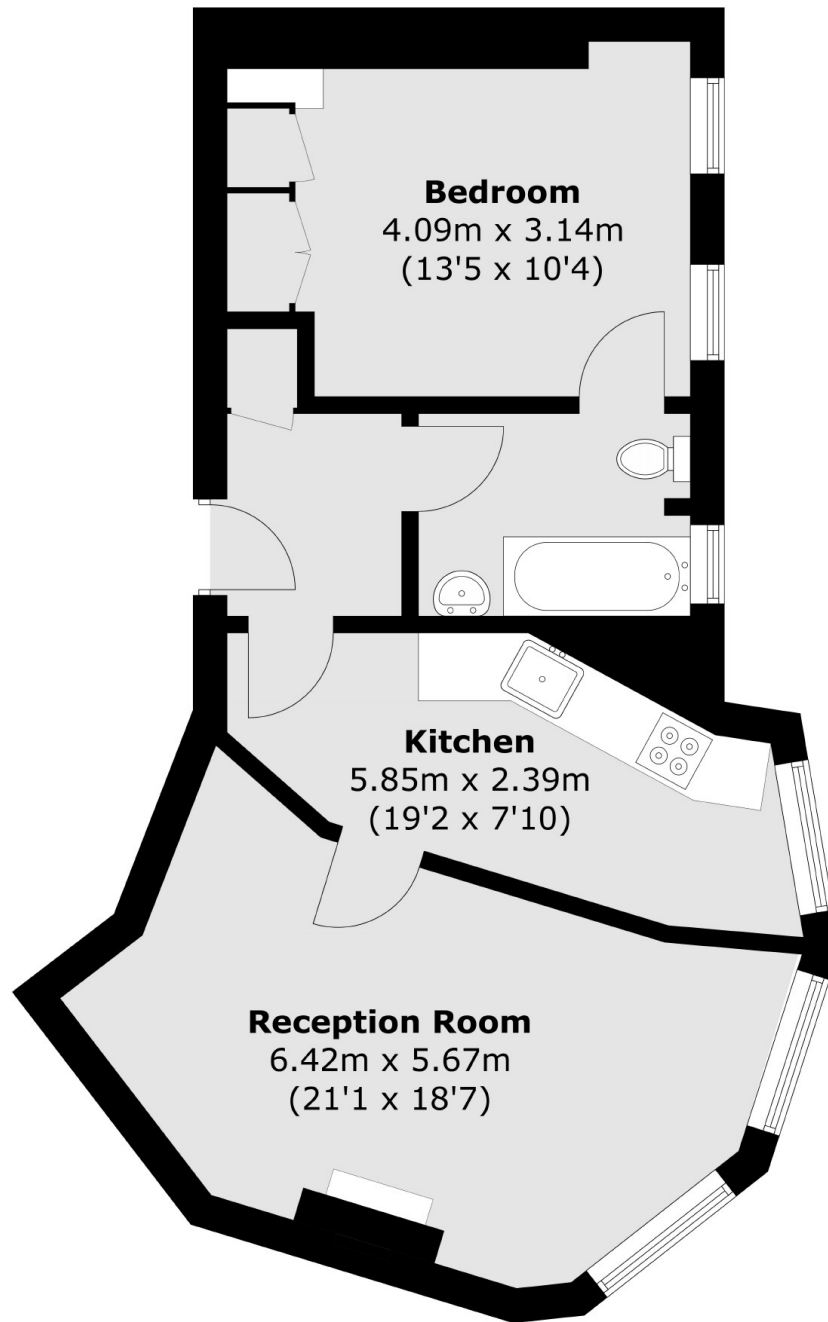
A spacious one double bedroom apartment on the second floor of a purpose built building in Westminster. Bright reception room, separate eat in kitchen, large double bedroom with built in wardrobes and bathroom with shower over bath. An ideal home for a couple or a single professional.

Millais House is situated at the south end, close to Pimlico station, of the Millbank Estate. Built in the 1950's, these red brick buildings are impressive and charming, and are all looked after incredibly well. The closest station is Pimlico at 0.4 miles.

### Features

- Bright and Spacious
- One Double Bedroom
- Second Floor Apartment
- Separate Eat In Kitchen
- Purpose Built Block
- Central Location

# Marsham Street, London, SW1P



## Second Floor

Total area (approx.): 49.5 sq. m (532.8 sq. ft)