



Tachbrook Street, SW1V

£623 Per week

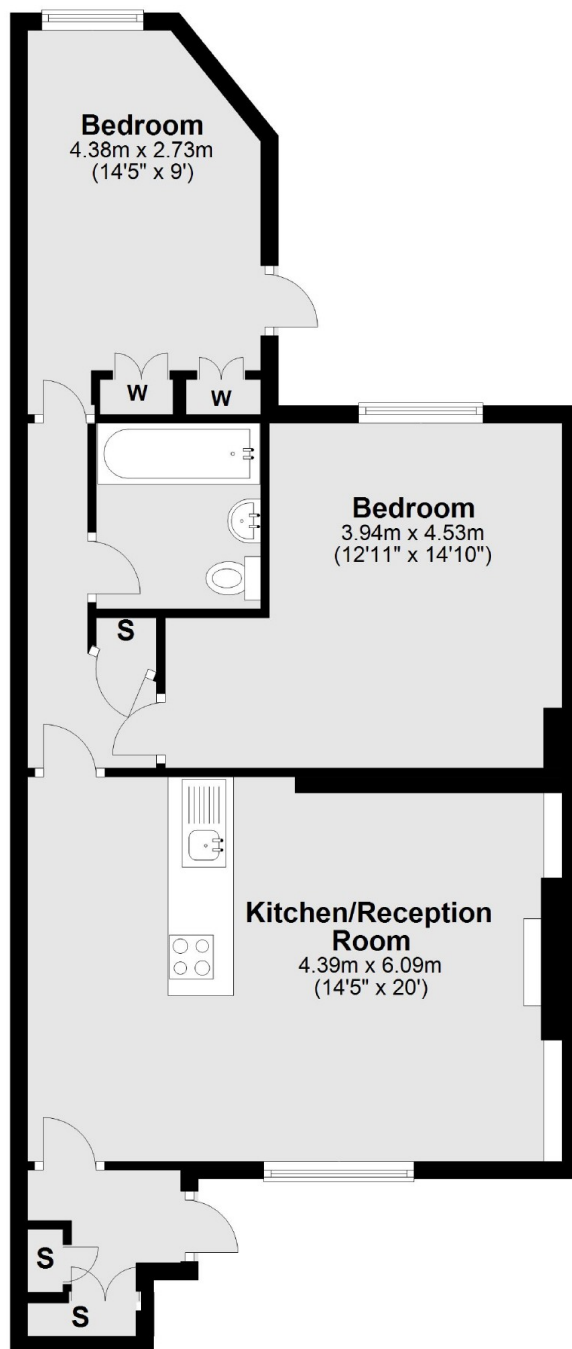
A spacious two double bedroom garden flat in Pimlico. The property has a generous sized open plan kitchen reception room with wood floors throughout and a feature fire place, two double bedrooms and modern bathroom. A perfect home for two professional sharers, a couple or small family.

Tachbrook Street is within walking distance to the the boutique shops, restaurants and local amenities on Churton Street and Warwick Way. Pimlico Station and Victoria railway station, with direct link to Gatwick airport, are also only a short distance away.

Features

- Two Double Bedrooms
- Private Garden
- Feature Fire Place
- Close To Station
- Wood Floors In Reception
- Great Location

Tachbrook Street, London, SW1V



Lower Ground Floor

Total area: approx. 65.7 sq. metres (707.1 sq. feet)