



Palace Street, SW1E

£895 Per week

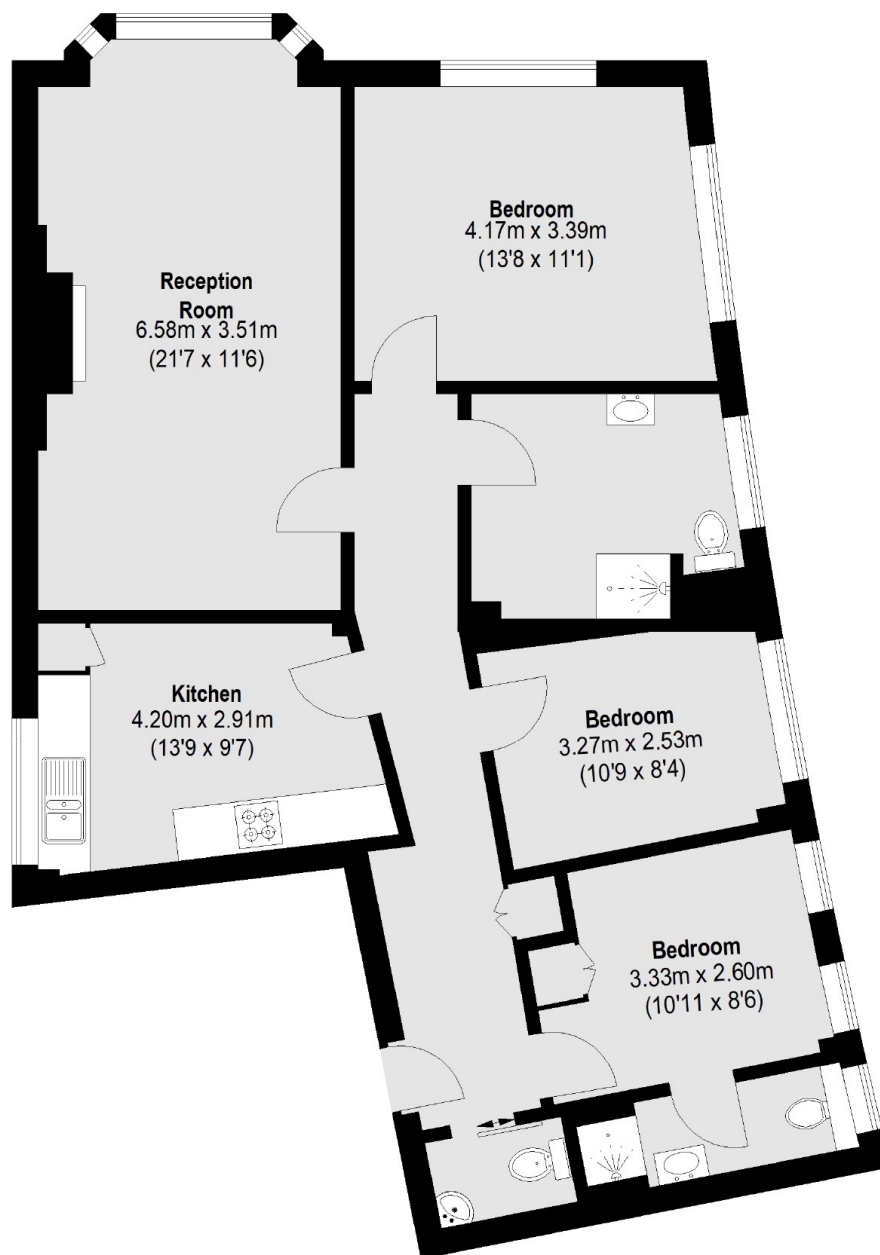
A magnificent recently refurbished three bedroom two bathroom third floor apartment. With lift refurbished to a high specification and offering plenty of light and stunning views over Buckingham Palace and Belgravia. HMO friendly!

Rosscourt Mansions is located a short walk from vibrant Victoria Street offering a range of shops, restaurants and bars as well as St. James Park and Hyde Park.

Features

Recently Refurbished
Three Bedrooms
Two Bathrooms
Reception Room
Separate Kitchen
High Specification

Palace Street, London, SW1E



Total area (approx.): 92.06 sq. m (991 Sq. ft)

Dexters

Pimlico
42 Denbigh Street
London
SW1V 2ER
Lettings
020 7976 5200

Energy Rating: C. We aim to make our particulars both accurate and reliable. However they are not guaranteed; nor do they form part of an offer or contract. If you require clarification on any points then please contact us, especially if you're traveling some distance to view. Please note that appliances and heating systems have not been tested and therefore no warranties can be given as to their good working order.

 **RICS** | Regulated
Estate Agent
and Letting Agent

dexters.co.uk