



## Montaigne Close, SW1P

£650 Per week

A stylish modern one double bedroom apartment to rent in a gated development with gym, underground parking, 24 hour portorage and a private patio area in the centre of Westminster.

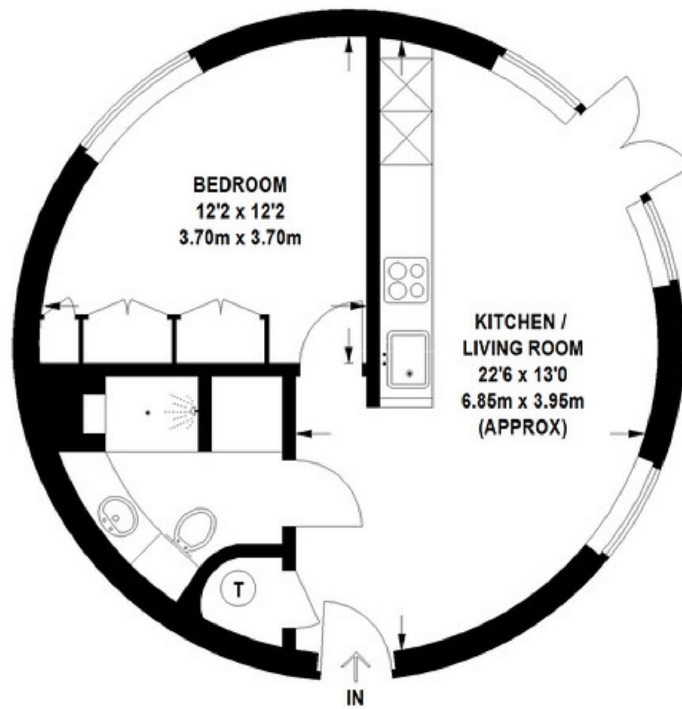
Montaigne Close is perfectly located, a short walk from the river as well as both Pimlico and Victoria stations. With the supermarkets and cafes of Warwick way across the road, you have everything you need nearby.

### Features

- One Double Bedroom
- Gated Development
- 24 Hour Portorage
- Patio Area
- Wood Floors
- Excellent Finishings

# Montaigne Close, London, SW1P

## HORSLEY COURT, SW1



### GROUND FLOOR

APPROXIMATE GROSS INTERNAL FLOOR AREA  
418 SQ FT / 38.8 SQ M

This floor plan is for identification purposes only, and is not to scale.  
Please check all dimensions, shapes and compass bearings before making any decisions  
reliant upon them. This plan must not be reproduced by any other person without permission.

©2017 [www.mattdavisphoto.co.uk](http://www.mattdavisphoto.co.uk)