

Montaigne Close, SW1P

£550 Per week

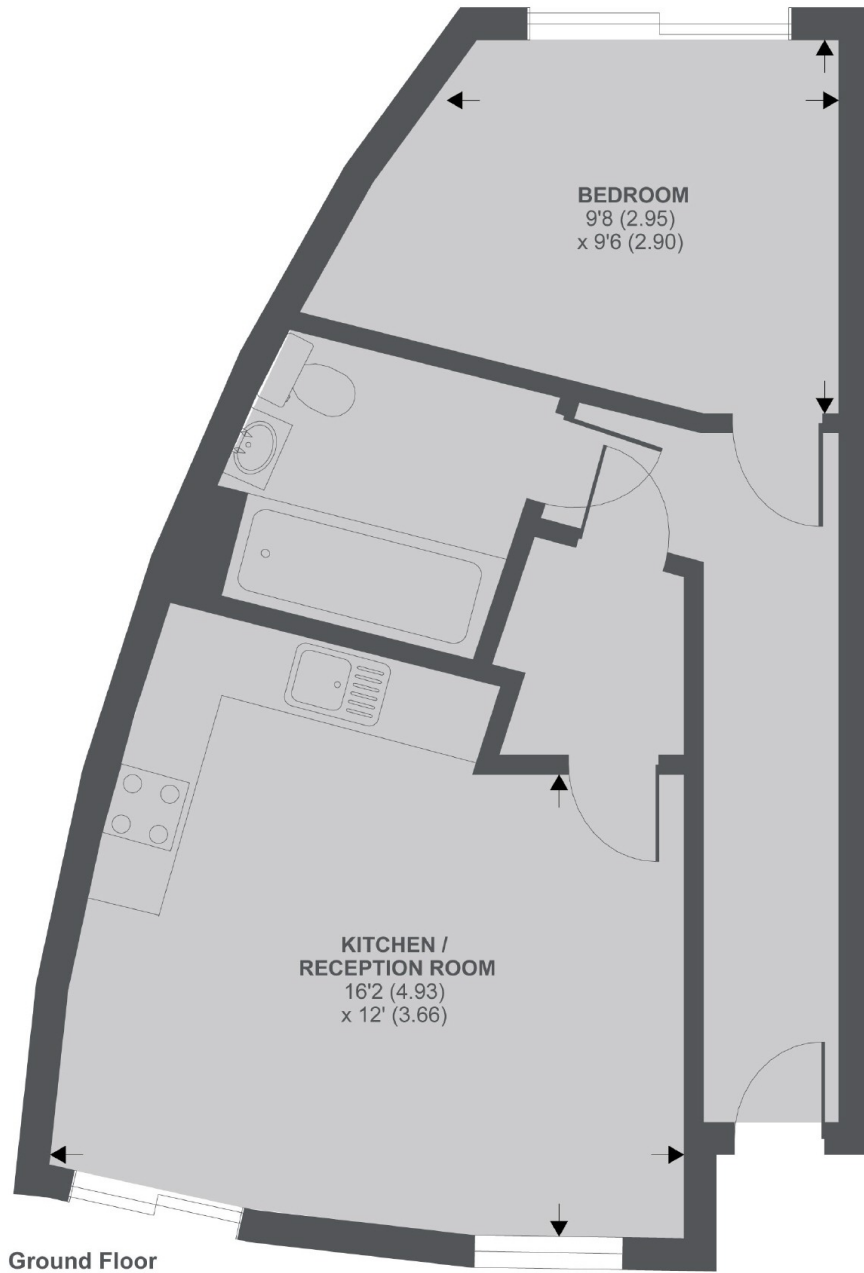
A spacious one double bedroom apartment to rent in a gated development with gym, underground parking and 24 hour porter service. Bright reception room with wood floors and access to patio, open plan kitchen, good size double bedroom with second patio garden and modern bathroom with shower over bath. An ideal home for a single professional tenant or a couple.

Montaigne Close is perfectly located, a short walk from the river as well as both Pimlico and Victoria stations. With the supermarkets and cafes of Warwick way across the road, you have everything you need nearby.

Features

- One Double Bedroom
- Gated Development
- 24 Hour Porterage
- Two Patio Areas
- Wood Floors
- Underground Parking

Montaigne Close, London, SW1P



Montaigne Close SW1P

TOTAL APPROX FLOOR AREA 496 SQ.FT 46 SQ.M

Copyright nichecom.co.uk 2019 REF : 423859

Dexters

Pimlico
42 Denbigh Street
London
SW1V 2ER

Lettings
020 7976 5200

Energy Rating: C. We aim to make our particulars both accurate and reliable. However they are not guaranteed; nor do they form part of an offer or contract. If you require clarification on any points then please contact us, especially if you're traveling some distance to view. Please note that appliances and heating systems have not been tested and therefore no warranties can be given as to their good working order.

 **RICS** | Regulated
Estate Agent
and Letting Agent

dexters.co.uk