

Claverton Street, SW1V

£461 Per week

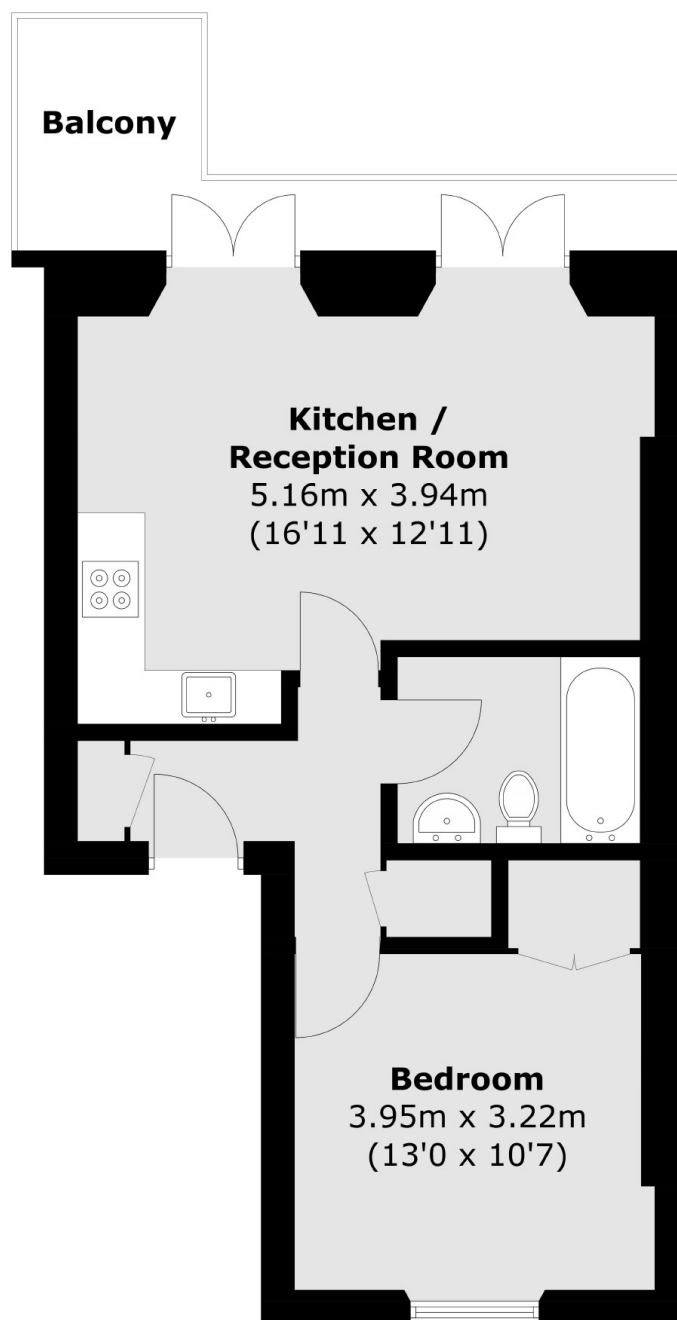
A bright one double bedroom apartment on the first floor of a period conversion in Pimlico. Reception room with high ceilings and wood floors leading to private balcony, open plan kitchen, double bedroom and bathroom with shower over bath. An ideal home for a couple or single professional.

Claverton Street is located just off of Lupus Street which has a range of shops, cafés and restaurants for residents. Pimlico underground station is also a short walk away.

Features

- One Double Bedroom
- First Floor Apartment
- Open Plan Kitchen
- High Ceilings
- Balcony
- Period Conversion

Claverton Street, London, SW1V



Total area (approx.): 37.7 sq. m (405.8 sq. ft)
Balcony: 6.1 sq. m (65.7 sq. ft)