



Monck Street, SW1P

£750 Per week

A modern and smart two double bedroom, two bathroom apartment with wood floors in a 24 hour portered secure building with a south west facing private balcony.

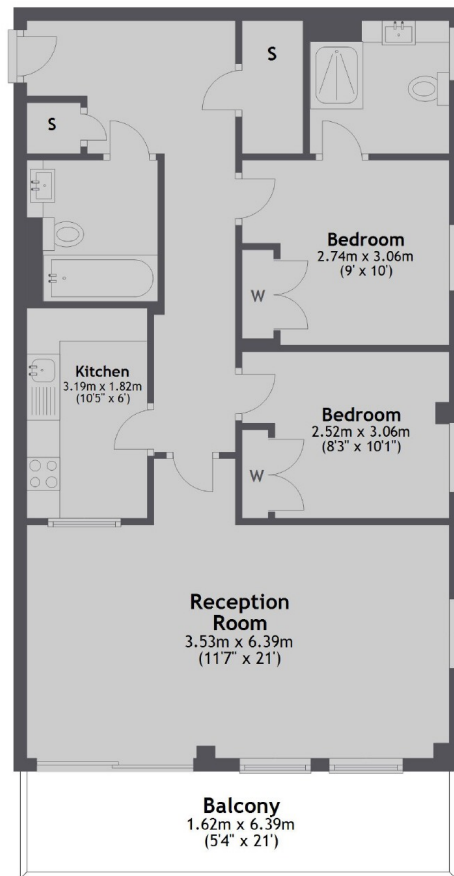
Monck Street is well located near to Westminster and the Home Office. There are many local shops close by, and an abundance of cafés and eaterys such as Pret, Starbucks and Ravello. The closest stations are St James Park, Westminster and Victoria.

Features

- Two Bedrooms
- Two Bathrooms
- Balcony
- Porter
- Fifth Floor with Lift
- Pimlico, Victoria and Westminster

Monck Street, London, SW1P

Fifth Floor



Main area: Approx. 71.4 sq. metres (768.4 sq. feet)
Plus balconies, approx. 10.8 sq. metres (115.9 sq. feet)