



## Old Queen Street, SW1H

£975 Per week

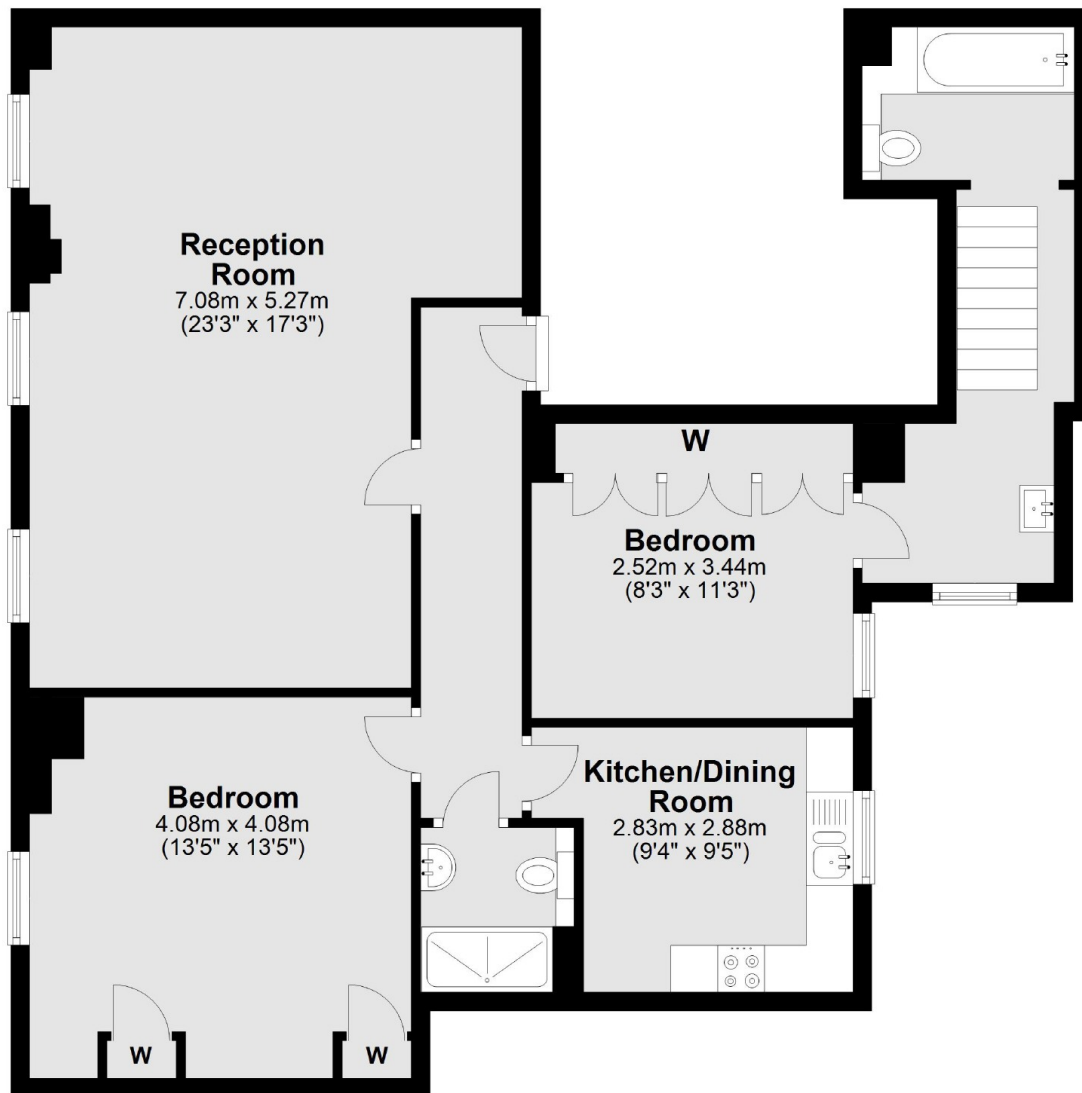
A beautifully refurbished modern two bedroom, two bathroom property on the first floor just south of Birdcage Walk and St James's Park. The flat is flooded with natural light and has plenty of storage throughout.

Old Queen Street is perfectly located just south of St James's Park, just moments from the tube station. Victoria Street and all the shops, restaurants and cafes is a two minute walk away.

### Features

Wood Floors Throughout  
Separate Kitchen  
Built In Storage  
Lift  
Modern Interior  
First Floor

# Old Queen Street, London, SW1H



## First Floor

Total area: approx. 90.5 sq. metres (974.4 sq. feet)